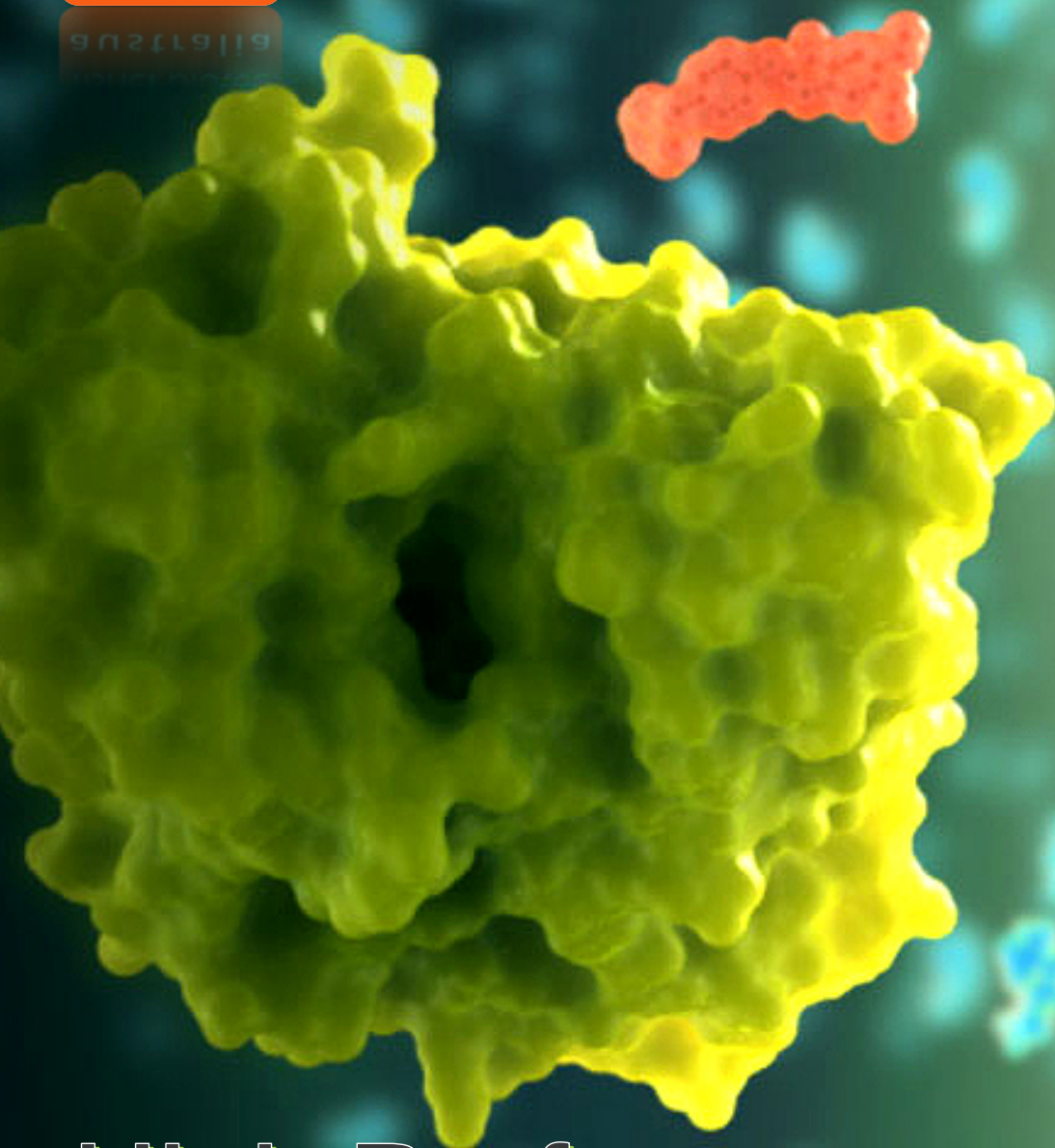




www.fisherbiotec.com



High Performance Protein Expression, Purification & Analysis Product Catalog

Agencies

Agency Name	Agency Profile
ABCAM	The Abcam range of protein research tools are designed to give consistent and accurate results. The portfolio includes antibody arrays and kits, and kits and reagents for western blot protein electrophoresis, cellular fractionation, and protein purification and quantification.
CLEAVER SCIENTIFIC	Cleaver Scientific manufactures a comprehensive range of quality injection molded electrophoresis tanks, supporting equipment and consumables. This range includes horizontal gel systems and vertical gel systems suitable for use with pre-cast or hand-cast gels, blotters and power supplies.
IBA LIFESCIENCES	IBA Lifesciences develops high performance research tools for protein and cell isolation based on their proprietary Strep-tag® technology. Products are available for applications such as protein affinity chromatography, cell isolation, cell simulation and expansion, cloning and transfection, exosome isolation, and protein interaction.
LIFE DIAGNOSTICS	Life Diagnostics manufactures ELISA kits, SPARCL™ kits, purified biomarkers and antibodies for preclinical research, and veterinary diagnostics. Areas of expertise include cardiovascular, acute phase, immunotoxicity and immunology biomarkers in species including house, rat, rabbit, cat, dog, pig, cow, monkey and chicken.
LIFEREAL BIOTECHNOLOGY	LifeReal Biotechnology is a manufacturer and supplier of life science and clinical diagnostic products and equipment.
MAESTROGEN	Maestrogen develops and offers a wide variety of products including Spectrophotometers, DNA/protein ladders, transilluminators, image systems and other innovative research tools.
VILBER	Vilber is a world-leading life science company that develops and manufactures imaging and analysis systems for fluorescence, chemiluminescence and bioluminescence applications.

INDEX

<u>CLONING & PROTEIN EXPRESSION</u>	4
Vectors	5
<u>PROTEIN PURIFICATION</u>	5
Strep-Tactin® 4Flow®, MagStrep “Type3” XT Beads	5-6
Products for Protein Purification	6
<u>VERTICAL PROTEIN ELECTROPHORESIS SYSTEMS</u>	7
omniPAGE Mini, omniPAGE Mini Wide	7
omniPAGE WAVE Maxi, omniPAGE Maxi Plus	8
omniBLOT Blotter, omniBLOT Blotter (High Intensity)	9
Combs for Vertical Systems	10
<u>POWER SUPPLIES</u>	11
PS250HA & PS300GP Power Supplies	11
PowerPRO 300 & PowerPro 3AMP Power Supplies	12
<u>SEMI DRY BLOTTING</u>	13
SD10 & SD20 Semi Dry Blotters	13
<u>ELECTROPHORESIS CONSUMABLES</u>	14-19
Precast Gels - RunBlue™	14
Protein Ladders	15
Stains - InstantBlue® Protein Stain	16
Western Blotting Kits	16-17
Conjugation Kits and Labels	18-19
<u>IMAGING SYSTEMS</u>	20
<u>IMMUNOLOGICAL ASSAYS & PURIFIED BIOMARKERS</u>	21
<u>MICRO-VOLUME SPECTROPHOTOMETERS</u>	22-23
NanoReady Touch MV Spectrophotometer	22
MaestroNano (MN-917) MV Spectrophotometer	23

Cloning & Protein Expression

Competent E. coli TOP10

Chemically competent cells for plasmid propagation

The *IBA Lifesciences* Competent E. coli TOP10 cells are ready for heat shock transformation with vector DNA and its subsequent propagation for cloning and transfection purposes. The chemically competent cells are provided as 20 separate one-shot reactions. Transformed cells can be selected by blue/white screening.



The genotype of Competent E. coli TOP10 cells is F- mcrA (mrr-hsdRMS-mcrBC) 80lacZ M15 lacX74 recA1 ara 139 (ara-leu)7697 galU galK rpsL (Str^R) endA1 nupG. Ideal expression host for recombinant Strep-tag®II and Twin-Strep-tag® proteins.

MEXi Mammalian Expression System

Economic system for highly pure proteins

The *IBA Lifesciences* MEXi offers all essential components for efficient protein expression:

- HEK293E cell-line, cell-culture media and expression vector are perfectly matched to provide high protein yields without further optimization.
- Efficient nuclear import and extrachromosomal replication due to vector encoded EBV origin of replication (oriP) and EBNA-1 provided by MEXi-293E cells.
- Transient expression for time and cost-efficient protein production.
- Multiple expression vectors with different features available.
- Twin-Strep-tag® for highly pure proteins.



- › High protein yields
- › Easy handling
- › Optimized components
- › Cost-effective
- › IP free

Economic system
for highly
pure proteins

Catalog №	Description
5-52XX-000	pDSG-IBA Expression Vectors
2-6010-010	MEXi-CM Culture Medium
2-6011-010	MEXi-TM Transfection Medium
2-6001-001	MEXi-293E HEB293E Cell Line

[BACK TO INDEX](#)

Vectors

IBA Lifesciences have developed a range of vectors mainly for use with its MEXi Mammalian Expression system and StarGate® cloning system. The vectors have been designed for expression in mammalian cells, yeast *E. coli*, and insect cells. [View](#) the full list of Vectors available.

Protein Purification

Strep-Tactin®XT 4Flow®

Efficient protein purification independent from the protein class

The *IBA Lifesciences* Strep-Tactin®XT 4Flow® columns contain a 4% agarose coupled with the streptavidin variant Strep-Tactin®XT. Due to the broad pH compatibility, excellent pressure stability, outstanding target purity (> 95%), and highest binding affinity, the resin is recommended for all protein classes, especially for low abundant or challenging proteins.

The low concentrated agarose enables the simple attachment of larger proteins to the stationary phase, making it particularly suitable for purification of high-molecular-weight targets.

In addition, Strep-Tactin®XT 4Flow® allows the application of denaturing agents such as urea. In addition, a further increase in protein yield can be achieved through the high capacity variant of Strep-Tactin®XT 4Flow®.

- Higher affinity and protein yield even for large proteins.
- Higher capacity for large proteins.
- Broad pH stability (pH 4-10).
- Higher pressure stability compared to Strep-Tactin® Sepharose.
- Cost efficient.



[BACK TO INDEX](#)

MagStrep "Type3" XT Beads

Due to the magnetic core, no centrifugation step is required

The IBA Lifesciences MagStrep "Type3" XT Beads are Strep-Tactin®XT coated ferrimagnetic spheres with the following characteristics:

- High binding capacity (0.85 nmol/μl beads, corresponding to 25.5 μg of a 30 kDa protein).
- Very low non-specific protein binding due to improved coating.
- Flexible elution conditions, under denaturing conditions by boiling in SDS gel loading buffer or under native conditions with biotin.
- High affinity for Strep-tag® - due to new Strep-Tactin®XT.



Products for Protein Purification

IBA Lifesciences



Format	Size	Strep-Tactin®XT 4Flow®	Strep-Tactin®XT 4Flow® High Capacity
50% Suspension	4 ml	2-5010-002	2-5030-002
	20 ml	2-5010-010	2-5030-010
	50 ml	2-5010-025	2-5030-025
Gravity Flow Columns	5 x 0.2 ml	2-5011-005	2-5031-005
	1 ml	2-5012-001	2-5032-001
	5 ml	2-5013-001	2-5033-001
	10 ml	2-5014-001	2-5034-001
Cartridges	1 ml	2-5021-001	2-5025-001
	5 ml	2-5022-001	2-5026-001
MagStrep "Type3" XT Beads	2 ml	2-4090-002	
	10 ml	2-4090-010	
Strep-Tactin®XT Spin Columns	25 spin columns	2-4150-025	
Strep-Tactin®XT Spin Column Kit	1 kit	2-4151-000	
Strep-Tactin®XT 4Flow® Starter Kit	1 kit	2-5998-000	

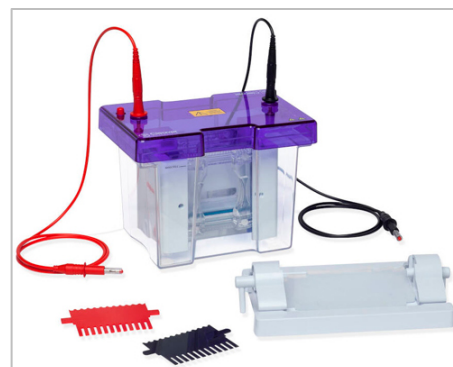
[BACK TO INDEX](#)

Vertical Protein Electrophoresis Systems

omniPAGE Mini

Cleaver Scientific

- Run a maximum of four gels within an hour.
- Perform 2-D and blotting within a day.
- Undertake discovery projects.
- Screen new samples and evaluate sample preparation conditions.

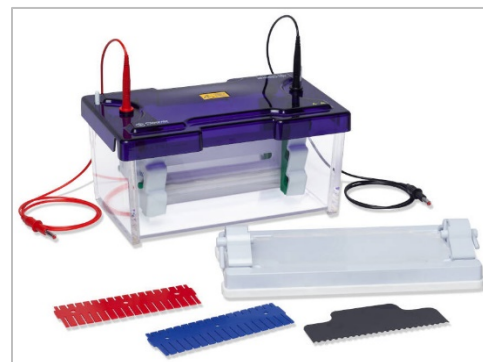


Specifications	CVS10D	CVS10DSYS	CVS10DSYS-CU	CVS10PRE
Unit Dimensions (cm)	19 x 13 x 15	19 x 13 x 15	19 x 13 x 15	19 x 13 x 15
Plate Dimensions	10 x 10 x 0.2	10 x 10 x 0.2	10 x 10 x 0.2	10 x 10 x 0.2
Gel Dimensions	8 x 8.5	8 x 8.5	8 x 8.5	8 x 8.5
Capacity	1 - 4 Gels	1 - 4 Gels	1 - 4 Gels	1 - 4 Gels
Maximum Sample Capacity	80	80	80	80
Maximum Buffer Volume (ml)	1200	1200	1200	1200
Casting Base included	No	Yes	Yes	No
Additional Caster included	No	No	Yes	No
Blotting Insert (optional)	VS10BI	VS10BI	VS10BI	VS10BI
2D Insert (optional)	VS10DCI	VS10DCI	VS10DCI	VS10DCI

omniPAGE Mini Wide

Cleaver Scientific

- Offers the capacity of two mini gels on a single gel.
- Rapid gel casting and loading.
- Optional low or high buffer volumes.
- Rapid set-up cooling.



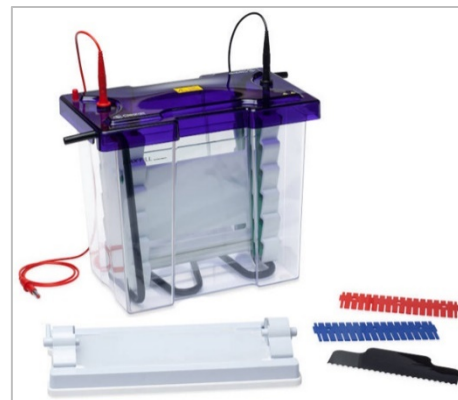
Specifications	VS10WD	VS10WDSYS	VS10WDSYS-CU
Unit Dimensions (cm)	26 x 16 x 16	26 x 16 x 16	26 x 16 x 16
Plate Dimensions	20 x 10	20 x 10	20 x 10
Gel Dimensions	18 x 8	18 x 8	18 x 8
Capacity	1 - 4 Gels	1 - 4 Gels	1 - 4 Gels
Maximum Sample Capacity	192	192	192
Maximum Buffer Volume (ml)	2800	2800	2800
Casting Base included	No	Yes	Yes
Additional Caster included	No	No	Yes
Blotting Insert (optional)	VS10WBI	VS10WBI	VS10WBI
2D Insert (optional)	VS10WDCI	VS10WDCI	VS10WDCI

[BACK TO INDEX](#)

omniPAGE WAVE Maxi

Cleaver Scientific

- Vertical screw-clamp technology reduces the number of screws required for set-up compared to traditional large-format systems, dramatically reducing assembly time.
- No top tank assembly - a built-in inner buffer chamber within the PAGE insert allows set-up to be completed without inclusion of a top tank or upper buffer chamber.

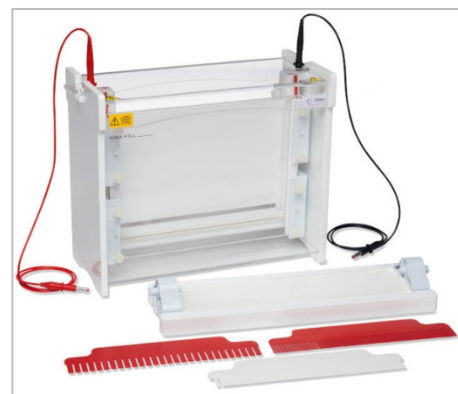


Specifications	VS20WAVED	VS20WAVESYS	VS20WAVESYS-CU
Unit Dimensions (cm)	30 x 18 x 27	30 x 18 x 27	30 x 18 x 27
Plate Dimensions	20 x 20 x 0.4	20 x 20 x 0.4	20 x 20 x 0.4
Gel Dimensions	16 x 17.5	16 x 17.5	16 x 17.5
Capacity	1 - 4 Gels	1 - 4 Gels	1 - 4 Gels
Maximum Sample Capacity	192	192	192
Maximum Buffer Volume (ml)	5300	5300	5300
Casting Base included	No	Yes	Yes
Additional Caster included	No	No	Yes
Blotting Insert (optional)	VS20BI	VS20BI	VS20BI
2D Insert (optional)	VS20DC1	VS20DC1	VS20DC1

omniPAGE Maxi Plus

Cleaver Scientific

- The omniPAGE Maxi Plus is Ideal for second-dimension electrophoresis.
- Accepts IPG strips 24 cm in length, the longest available commercially.
- Rapid set-up cool packs enhance resolution, particularly during extended runs.

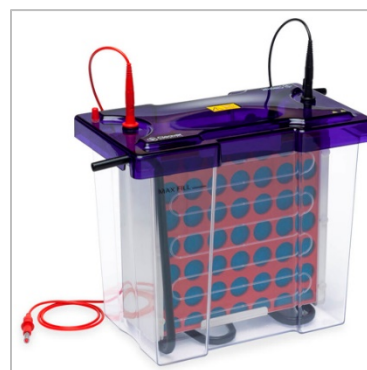
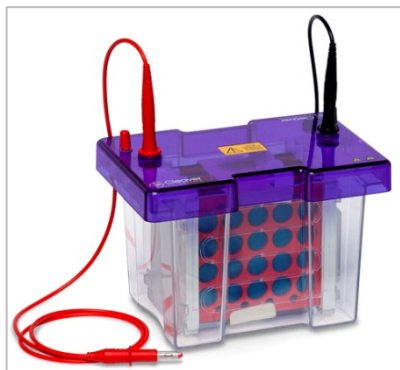


Specifications	VS30D	VS30DSYS
Unit Dimensions (cm)	36 x 33 x 18	36 x 33 x 18
Plate Dimensions	20 x 20 x 0.4	20 x 20 x 0.4
Gel Dimensions	28 x 20	28 x 20
Capacity	2 Gels	2 Gels
Maximum Sample Capacity	96	96
Maximum Buffer Volume (ml)	8400	8400
Casting Base included	No	Yes
Additional Caster included	No	No
Blotting Insert (optional)	VS30BI	VS30BI

[BACK TO INDEX](#)

omniBLOT Blotter

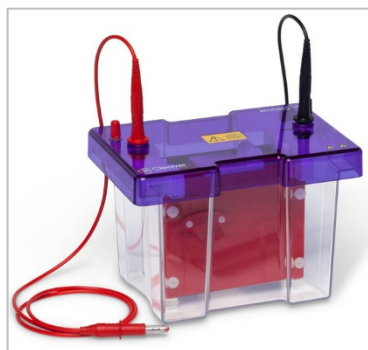
The *Cleaver Scientific* Mini omniBLOT Sub Blot systems are complete stand-alone units for submarine blotting. The versatile design of the omniPAGE tank and lid allows the unit to be easily adapted for vertical PAGE or IEF with capillary tube gels, using the relevant optional insert.



Specifications	SB10	SB10W	SB20
Unit Dimensions (cm)	19 x 13 x 15	26 x 16 x 16	30 x 18 x 27
Gel Dimensions	8 x 8.5	16 x 8.5	16 x 17.5
Capacity	1 - 4 Gels	1 - 4 Gels	1 - 4 Gels
Maximum Buffer Volume (ml)	1200	2800	6400

omniBLOT Blotter, High Intensity

Plate-electrodes 2 cm apart in the *Cleaver Scientific* Sub Blot Mini facilitate fast transfer of two stacked 8 x 8.5 cm mini gels and 4 cm apart in WAVE Sub Blot system for transfer of one Maxi gel. Multi-transfer capability in the WAVE also allows transfer of four omniPAGE Mini and two omniPAGE Mini Wide gels arranged side-by-side.



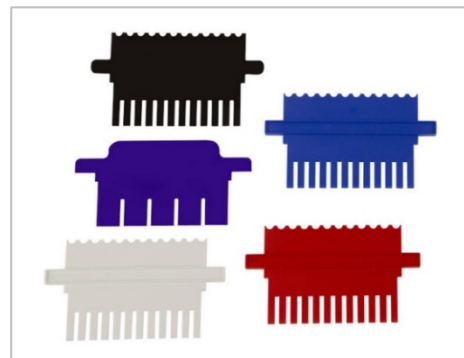
Specifications	SB10	SB10W
Unit Dimensions (cm)	19 x 13 x 15	30 x 18 x 27
Gel Dimensions	8 x 8.5	16 x 17.5
Capacity	2 Gels	1 Gel
Maximum Buffer Volume (ml)	1300	7000

[BACK TO INDEX](#)

Combs for Vertical Systems

Cleaver Scientific offer the widest range of combs available of any gel tank manufacturer. They fit virtually every application from preparatory electrophoresis to high-throughput screening. Available in four thicknesses and are color-coded:

- White - 1 mm supplied as standard
- Black - 0.7 mm for tightly resolved bands
- Red - 1.5 mm to maximize sample volume
- Blue - 2 mm to maximize sample volume.



omniPAGE Mini			
Catalog Nº	Nº wells	Comb thickness	Well spacing
VS10-1-0.75	1	0.75 mm	Standard
VS10-5-0.75	5	0.75 mm	Standard
VS10-9-0.75	9	0.75 mm	Standard
VS10-10-0.75	10	0.75 mm	Standard
VS10-12-0.75	12	0.75 mm	Standard
VS10-16-0.75	16	0.75 mm	Standard
VS10-20-0.75	20	0.75 mm	Standard
VS10-8MC-0.75	8	0.75 mm	Multi-channel
VS10-1-1	1	1 mm	Standard
VS10-5-1	5	1 mm	Standard
VS10-9-1	9	1 mm	Standard
VS10-10-1	10	1 mm	Standard
VS10-12-1	12	1 mm	Standard
VS10-16-1	16	1 mm	Standard
VS10-20-1	20	1 mm	Standard
VS10-8MC-1	8	1 mm	Multichannel
VS10-1-1.5	1	1.5 mm	Standard
VS10-5-1.5	5	1.5 mm	Standard
VS10-9-1.5	9	1.5 mm	Standard
VS10-10-1.5	10	1.5 mm	Standard
VS10-12-1.5	12	1.5 mm	Standard
VS10-16-1.5	16	1.5 mm	Standard
VS10-20-1.5	20	1.5 mm	Standard
VS10-8MC-1.5	8	1.5 mm	Multichannel
VS10-1-2	1	2 mm	Standard
VS10-5-2	5	2 mm	Standard
VS10-9-2	9	2 mm	Standard
VS10-10-2	10	2 mm	Standard
VS10-12-2	12	2 mm	Standard
VS10-16-2	16	2 mm	Standard
VS10-20-2	20	2 mm	Standard
VS10-8MC-2	8	2 mm	Multichannel
omniPAGE Maxi Plus			
Catalog Nº	Nº wells	Comb thickness	Well spacing
VS30-1-1	1	1 mm	Standard
VS30-2-1	2	1 mm	Standard
VS30-4-1	4	1 mm	Standard
VS30-75-1	75	1 mm	Standard
VS30-28MC-1	28	1 mm	Multichannel
VS30-56MC-1	56	1 mm	Multichannel

omniPAGE Mini Wide & omniPAGE Wave Maxi			
Catalog Nº	Nº wells	Comb thickness	Well spacing
VS20-1-0.75	1	0.75 mm	Standard
VS20-5-0.75	5	0.75 mm	Standard
VS20-10-0.75	10	0.75 mm	Standard
VS20-20-0.75	20	0.75 mm	Standard
VS20-30-0.75	30	0.75 mm	Standard
VS20-36-0.75	36	0.75 mm	Standard
VS20-48-0.75	48	0.75 mm	Standard
VS20-18MC-0.75	18	0.75 mm	Multi-channel
VS20-1-1	1	1 mm	Standard
VS20-5-1	5	1 mm	Standard
VS20-10-1	10	1 mm	Standard
VS20-20-1	20	1 mm	Standard
VS20-30-1	30	1 mm	Standard
VS20-36-1	36	1 mm	Standard
VS20-48-1	48	1 mm	Standard
VS20-18MC-1	18	1 mm	Multichannel
VS20-1-1.5	1	1.5 mm	Standard
VS20-5-1.5	5	1.5 mm	Standard
VS20-10-1.5	10	1.5 mm	Standard
VS20-20-1.5	20	1.5 mm	Standard
VS20-30-1.5	30	1.5 mm	Standard
VS20-36-1.5	36	1.5 mm	Standard
VS20-48-1.5	48	1.5 mm	Standard
VS20-18MC-1.5	18	1.5 mm	Multichannel
VS20-1-2	1	2 mm	Standard
VS20-5-2	5	2 mm	Standard
VS20-10-2	10	2 mm	Standard
VS20-20-2	20	2 mm	Standard
VS20-30-2	30	2 mm	Standard
VS20-36-2	36	2 mm	Standard
VS20-48-2	48	2 mm	Standard
VS20-18MC-2	18	2 mm	Multichannel
omniPAGE Maxi Plus (contin.)			
Catalog Nº	Nº wells	Comb thickness	Well spacing
VS30-1-1.5	1	1.5 mm	Standard
VS30-2-1.5	2	1.5 mm	Standard
VS30-4-1.5	4	1.5 mm	Standard
VS30-75-1.5	75	1.5 mm	Standard
VS30-28MC-1.5	28	1.5 mm	Multichannel
VS30-56MC-1.5	56	1.5 mm	Multichannel

[BACK TO INDEX](#)

Power Supplies

PS250HA & PS300GP Power Supplies

The Axygen® Power Supplies are ideal for molecular biology workflows including DNA, RNA, and protein gel electrophoresis applications

- Compact user interface - for use with up to four gel boxes simultaneously.
- Easy to set, LCD backlit, digital display.
- PS250HA has ability to set programs with 10 steps per program.
- PS300GP is ideal for small format protein gels or DNA horizontal gels.
- Both units have timers and are stackable.



Specifications	Axygen PS250HA Power Supply	Axygen PS300GP Power Supply
Output power	300W	90W
Output voltage range	5 to 250V	2 to 300V
Output current range	10 to 300 mA	4 to 500 mA
Timer	Approx. 99.99 hr/min	Approx. 99.99 hr/min
Terminal pairs	4 positive voltage and 4 negative voltage	4 positive voltage and 4 negative voltage
Resolution	Constant voltage: 1V step Constant current: 10 mA step Constant Power: 1W step	Constant voltage: 1V increment settings Constant current: 1 mA increment settings
Crossover	Automatic	Automatic
Pause function	Yes	Yes
Safety features	No load detection Load change detection Overload detection Ground leak detection Auto restart	No load detection Load change detection Overload detection Ground leak detection Auto restart
Programmable	Yes - can store up to ten 10-step methods	No



[BACK TO INDEX](#)

PowerPro 300 Power Supply, 300V, 700mA, 150W

The Cleaver Scientific PowerPro 300 is a versatile multi-function power supply suitable for a wide range of electrophoresis applications

- Five pairs of outlets for multiple gel tanks.
- Suitable for routine horizontal electrophoresis using multiSUB Mini, Midi and Choice.



PowerPro 3AMP Power Supply, 300V, 3000mA, 300W

The Cleaver Scientific PowerPro 3AMP is designed for virtually all high current electrophoresis applications

- The higher current output capability is perfect for electroblotting units with high-intensity plate electrodes, particularly the OmniBLOT Maxi, VS20 WAVE and semi dry blotting systems.



Specifications	PowerPRO 300 Power Supply	PowerPRO 3AMP Power Supply
Maximum Voltage (V)	300	300
Maximum Current (mA)	700	3000
Maximum Power (W)	150	300
Resolution	1V, 1 mA	1V, 10 mA
Number of Output Pairs	5	5
Timer	1~999 mins	1~999 mins
Operating Modes	Constant parameter, programmable 6 step program	Pre-programmed settings
Output Diameter (mm)	4	4
No Load Detection	YES	YES
Overload Detection	YES	YES
Ground Leakage Detection	YES	YES
Over Temperature Protection	YES	YES

[BACK TO INDEX](#)

Semi Dry Blotting

Semi Dry Blotters SD10 and SD20

The Cleaver Scientific Semi Dry Blotters offer rapid transfer times for DNA, RNA, and protein blotting, typically 15 – 20 minutes

- Semi Dry Blotters can be used for all types of blotting - Western, Southern, and Northern, via uncomplicated buffer and set-up procedures.
- Compatible with gel thicknesses from 0.25 mm up to 10 mm without the need for additional equipment.
- Each unit is compatible with their respective omniPAGE vertical gel system.



Specifications	SD10	SD20
Unit Dimensions (cm)	16.5 x 15 x 5.5	26 x 26 x 7
Gel Dimensions	10 x 10	16 x 17.5
Capacity	1 Gel	1 Gel

[BACK TO INDEX](#)

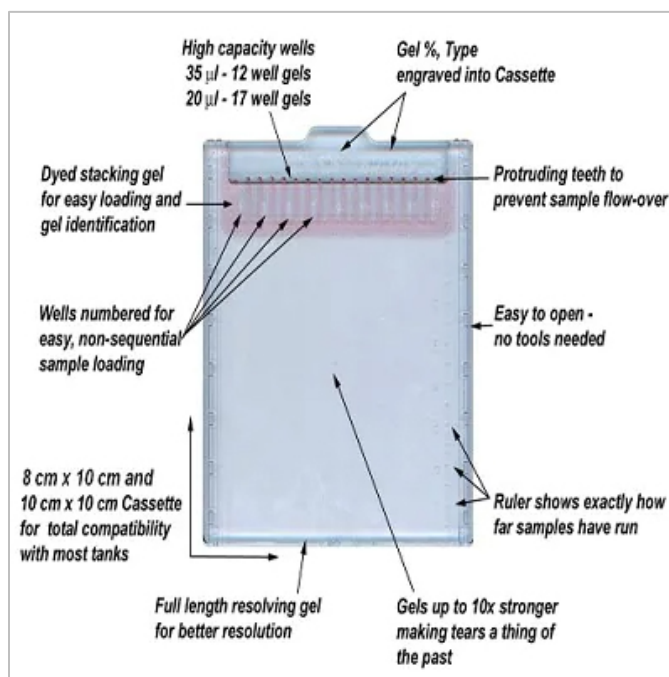
Electrophoresis Consumables

Precast Gels - RunBlue™

The Abcam Precast Gels - RunBlue™ offer superior rigidity and stability over traditional polyacrylamide gels.

RunBlue™ is compatible with the most common tanks and systems. For convenience, the precast gels come with the comb already removed as the cassette locks the fingers in place. For additional convenience, there is no tape to be removed and cassettes can be opened by hand.

- Proprietary photo-polymerization process for sharper bands and batch-to batch consistency.
- Composite gel technology enables durable gels with longer shelf-life, ten times stronger than other brands.
- Optimized running buffer offers low heat generation.
- Compatible with commonly used electrophoresis equipment.

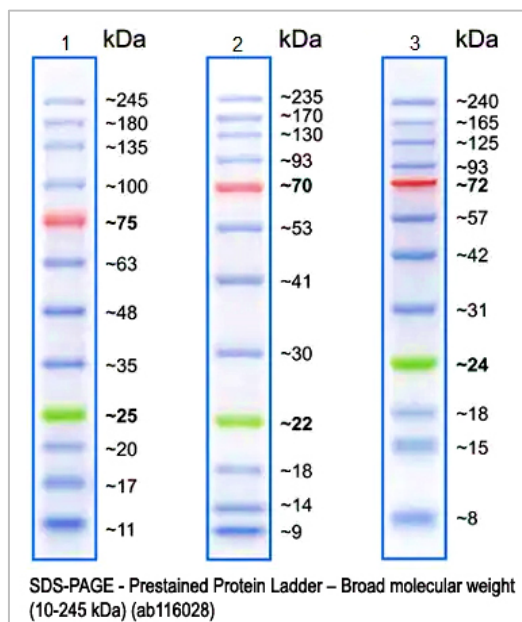


	10 x 10cm cassette compatible with SureLock™ Tanks					8 x 10cm cassette compatible with Mini-PROTEAN® Tetra Cell	
	Bis-Tris Precast Gels - RunBlue™		TEO-Tricine Precast Gels - RunBlue™			TEO-Tricine Precast Gels - RunBlue™	
Gel %	12-well	17-well	2-well	12-well	17-well	12-well	17-well
8	ab270021	ab270462		ab119202	ab139597	ab139594	ab139604
10	ab270463	ab270464		ab119203	ab139598	ab139206	ab139605
12	ab270465	ab270466		ab139591	ab139599	ab139207	ab139606
16				ab139592	ab139600	ab139595	ab139607
4 - 8 Gradient				ab139204	ab139601	ab139208	ab139608
4 - 12 Gradient	ab270467	ab270469		ab139593	ab139602	ab139596	ab139609
4 - 20 Gradient			ab270461	ab139205	ab139603	ab139209	ab139610

[BACK TO INDEX](#)

Protein Ladders

The Abcam Protein Ladders are available in Prestained and Unstained formats.



Catalog №	<i>Abcam</i> Protein Ladders (Prestained, Unstained)	Capacity
ab116028	Prestained Protein Ladder - Broad range (Bands at 245, 180, 135, 100, 75, 63, 48, 35, 25, 20, 17 and 11 kDa) (500ul)	10-245 kDa
ab116027	Prestained Protein Ladder - Mid range (Bands at 180, 130, 100, 75, 63, 48, 35, 28, 20, 15 and 10 kDa) (500ul)	10-180 kDa
ab234617	Prestained Protein Ladder - Mid Broad range (Bands at 180, 100, 72, 60, 45, 35, 17 and 10 kDa) (500ul)	10-180 kDa
ab116029	Prestained Protein Ladder - Extra Broad range (Bands at 245, 180, 135, 100, 75, 63, 48, 35, 25, 20, 17, 11 and 5 kDa) (500ul)	5-245 kDa
ab234592	Prestained Protein Ladder - Extra Broad range (Bands at 270, 175, 130, 95, 66, 52, 37, 30, 16 and 6.5 kDa) (500ul)	6.5-270 kDa
ab234618	Unstained Protein Ladder (Bands at 200, 150, 100, 85, 60, 50, 40, 30, 25, 20, 15 and 10 kDa) (500ul)	10 - 200 kDa



Catalog №	<i>Maestrogen</i> Protein Ladders (Prestained)	Capacity
02101-250	AccuRuler RGB Stained Protein Ladder - Bands at 180, 130, 100, 75, 63, 48, 35, 28, 17 and 10 kDa (250 µl)	10-180 kDa
02102-250	AccuRuler RGB Stained Protein Ladder - Bands at 245, 180, 135, 100, 75, 63, 48, 35, 25, 17 and 11 kDa (250 µl)	8-245 kDa

[BACK TO INDEX](#)

Stains - InstantBlue® Protein Stain

The Abcam InstantBlue® Protein Stain is a ready-to-use Coomassie protein stain for Polyacrylamide gels

InstantBlue's® unique mechanism of action stains proteins in just 15 minutes, while leaving a clear background eliminating the need to fix, wash or de-stain.

Formulated for safe use and easy disposal, it is ready to use straight out of the bottle and comes in convenient pre-mixed one litre bottles.

InstantBlue® will stain at least 40 mini gels per bottle, boasting economical staining with only 25ml per mini gel.



Stains – Polceau S Staining Solution

The Cleaver Scientific ready-to-use Polceau S Staining Solution is reusable

Polceau S Staining Solution is ideal for membrane staining, and early protein detection, following transfer before Western Blotting.

Available in convenient 500 ml bottle.



Western Blotting – LumiGO ECL Substrate Kit

The Cleaver Scientific LumiGO is the best entry level ECL substrate on the market.

The ECL substrate has stable light output for low picogram detection level. The formulation provides a low background for a high signal to noise ratio.

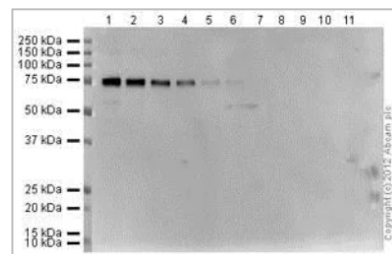
Working solution is stable for at least three days, and the kit is stable for one year at room temperature.



[BACK TO INDEX](#)

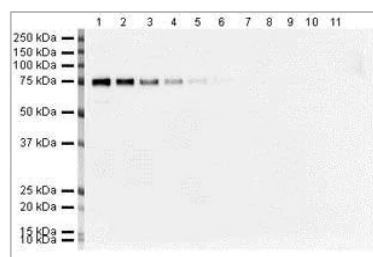
ECL Blotting Substrate Kit

The *Abcam* ECL Western Blotting Substrate ab65623 is a sensitive, non-radioactive, enhanced luminol-based chemiluminescent substrate for easy detection of horseradish peroxidase (HRP) or immunoblots. The ECL Western Blotting Substrate offers superior signal and clear background. Blots can be repeatedly exposed to X-ray film to obtain optimal results or stripped of the immunodetection reagents and re-probed.



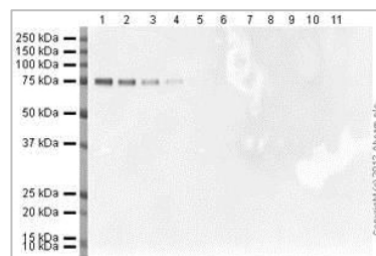
ECL Substrate Kit - High Sensitivity

The *Abcam* High Sensitivity ECL Substrate ab133406 is designed for the detection of proteins with 23pg-187ng of protein per band. It uses an enhanced chemiluminescent substrate for western blotting that was developed for film imaging and is also compatible with CCD imaging. The high sensitivity ECL substrate produces a strong signal with very low background. Additionally, the ECL signal is long lasting, allowing repeated exposures without fear of losing data.



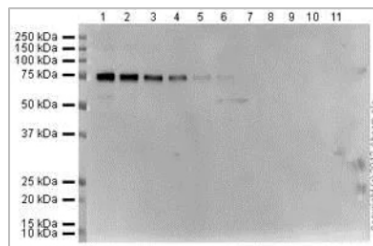
ECL Substrate Kit - Very High Sensitivity

The *Abcam* Very High Sensitivity ECL Substrate ab133408 uses a new horseradish peroxidase (HRP) substrate specially developed to take advantage of the large linear dynamic range provided by CCD imaging. It is designed for the detection of proteins from 4.6pg to 4.7ng of protein per band. ECL Substrate Kit ab133408 produces a strong, extremely long-lived signal, which, combined with very low background levels, allows for long exposure times enabling the detection of low-abundance proteins.



ECL Substrate Kit - Ultra High Sensitivity

The *Abcam* Ultra High Sensitivity ECL Substrate Kit ab133409 is a horseradish peroxidase (HRP) substrate specially developed for Western blotting detection of very low abundance proteins with 1.2pg-2ng of protein per band. ECL Substrate Kit ab133409 produces a strong, long-lived signal, which, combined with very low background levels, allows for long exposure times enabling the detection of low-abundance proteins.



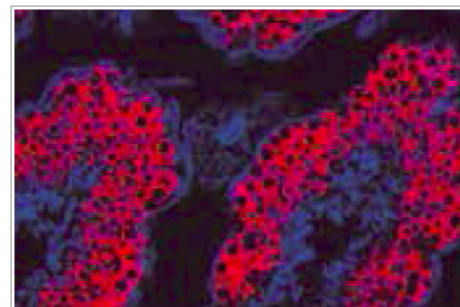
[BACK TO INDEX](#)

Conjugation Kits - Lightning-Link®

The Abcam Lightning-Link® conjugation kits offer choice and flexibility, with over 45 labels

The Lightning-Link® conjugation kits can quickly conjugate the included label to your antibody, protein or peptide, in as little as 20 minutes, giving you 100% antibody recovery in a wide range of applications, including FACS, ELISA, IHC, WB and Lateral Flow.

- Simple and consistent - Conjugate your antibody in 3 simple steps without antibody loss.
- Quick and easy - Kits only require 30 seconds of hands-on time.
- Scalable and efficient - Achieve consistent conjugation with 10µg to 100mg of antibody.



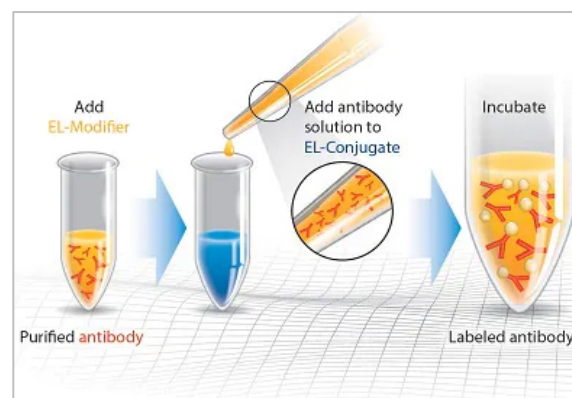
DyLight® 550 Conjugation Kit (Fast) - Lightning-Link® (ab201800)

Conjugation Kits - GOLD

The Abcam GOLD conjugation kits ab154873 allow easy and rapid conjugation in less than five minutes

Gold Conjugation Kits allow antibodies or proteins to be covalently attached to ultra-stable Gold nanoparticles at very high OD quickly and easily. The nanoparticles in the Abcam's Gold Conjugation Kit have a protective surface coat that can withstand the most extreme conditions (e.g. 2.5M NaOH at 70°C for > 1 hour).

The hands-on time for the Gold conjugation procedure is around 2 minutes and the conjugate is ready-to-use within 20 minutes.



- Easy and rapid conjugation - only 2 minutes hands-on time and 100% recovery of materials
- Site-specific labelling - Antigen binding sites of antibodies are free to bind the target molecule
- Proprietary surface coating prevents metal-protein interactions and enables covalent attachment to the Gold
- Fully scalable - easy transfer from R&D to manufacturing
- Uniform spherical shape and narrow size distribution.

Buffer Requirements: The biomolecule to be conjugated should ideally be in 10 mM amine-free buffer (e.g. MES, MOPS, HEPES), pH range 6.5 to 8.5. Sugars have no effect on conjugation efficiency. For incompatible buffers and low antibody concentrations, use Abcam rapid antibody purification and concentration kits for Nanoparticles.

[BACK TO INDEX](#)

Available Labels *(Abcam)*

Fluorescent labels

Conjugate	Ex/Em	Cat. №
Dylight® 405 (Fast)	400/420	ab201798
Dylight® 350 (Fast)	353/432	ab201797
AMCA (Fast)	350/445	ab195224
Atto 390	388/468	ab269895
Dylight® 488 (Fast)	493/518	ab201799
Alexa Fluor® 488	495/519	ab236553
FITC (Fast)	495/519	ab188285
FITC	495/519	ab102884
Atto 488	504/530	ab269896
Cy3® (Fast)	548/561	ab188287
Alexa Fluor® 555	555/565	ab269820
B-PE	546/575	ab102871
R-PE	565/575	ab102918
Dylight® 550 (Fast)	562/576	ab201800
Rhodamine (Fast)	561/588	ab188286
Atto 565	570/598	ab269897
Alexa Fluor® 568	578/603	ab269821
Texas Red® (Fast)	595/613	ab195525
PE/Texas Red	565/616	ab269899
Alexa Fluor® 594	590/617	ab269822
Dylight® 594 (Fast)	593/618	ab201801
PE/Atto 594	565/632	ab269900
Dylight® 633 (Fast)	638/658	ab201802
Atto 633	634/660	ab269898
APC	650/660	ab201807
Cy5® (Fast)	647/665	ab188288
Alexa Fluor® 647	650/665	ab269823
PE/Cy5®	565/666	ab102893
Dylight® 650 (Fast)	654/673	ab201803
PerCP	477/678	ab102907
FluoProbes 647H	650/684	ab269904
PE/Cy5.5®	565/693	ab102899
PerCP/Cy5.5®	477/694	ab102911
APC/Cy5.5®	650/694	ab102855
Cy5.5	675/694	ab269891
Dylight® 680 (Fast)	692/712	ab201804
Alexa Fluor® 700	702/723	ab269824
APC/Cy7®	650/774	ab102859
Dylight® 755 (Fast)	754/776	ab201805
PE/Cy7®	565/778	ab102903
Dylight® 800 (Fast)	777/794	ab201806

Enzyme labels

Conjugate	Cat. №
Alkaline phosphatase (AP)	ab102850
Alkaline phosphatase (AP) (Animal Free)	ab269901
Glucose oxidase (Gox)	ab102887
Horse radish peroxidase (HRP)	at102890

Biotin/Streptavidin/Oligo labels

Conjugate	Cat. №
Biotin (Fast, Type A)	ab201795
Biotin (Fast Type B)	ab201796
Streptavidin	ab102921
Oligonucleotide (10-120 nt in length)	at218260

Gold nano-particle labels

Conjugate	Cat. №
Gold nanoparticles (10 nm, 20 OD)	ab201808
Gold nanoparticles (20 nm, 20 OD)	ab188215
Gold nanoparticles (40 nm, 20 OD)	ab154873
Gold nanoparticles (60 nm, 20 OD)	ab188216
Gold nanoparticles (80 nm, 20 OD)	ab154876
Gold-Biotin nanoparticle (40 nm, 10 OD)	ab186922
Gold-Hydrazide nanoparticles (40 nm, 10 OD)	ab188284
Gold-Maleimide nanoparticles (10 nm)	ab269903
Gold-Maleimide nanoparticles (20 nm)	ab269902
Gold-Oligonucleotide nanoparticles (40 nm, 20 OD)	ab188290*
Gold-Streptavidin nanoparticles (40 nm, 10 OD)	ab186864

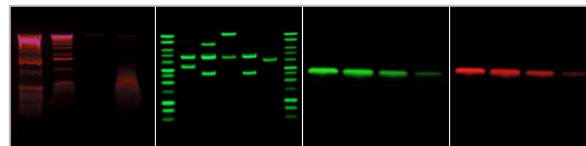
*Conjugate Gold nanoparticles to oligonucleotide (10-120 nt in length)

Latex particle labels

Conjugate	Cat. №
Latex nanoparticles (400nm Black), 40 µg (10 vials x 4 µg)	ab269894
Latex nanoparticles (400nm Black), 40 µg (1 vial)	ab269963
Latex nanoparticles (400nm Blue), 40 µg (10 vials x 4 µg)	ab269892
Latex nanoparticles (400nm Blue), 40 µg (1 vial)	ab269947
Latex nanoparticles (400nm Red), 40 µg (10 vials x 4 µg)	ab269893
Latex nanoparticles (400nm Red), 40 µg (1 vial)	ab269962

[BACK TO INDEX](#)

Imaging Systems



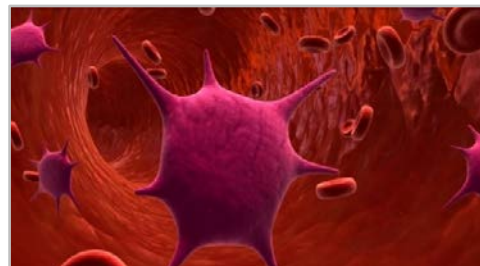
VilberFUSION-SOLO.6X BASIC SERIES	VilberFUSION-SOLO.6X PRO SERIES	VilberFUSION-SOLO.6S.EDGE V.070
EVO-6 CCD camera: 6.3 > 20 megapixels; -30°C; absolute CCD cooling > -55°C to ambient	EVO-6 CCD camera: 6.3 > 20 megapixels; -30°C; absolute CCD cooling > -55°C to ambient	EVO-6 CCD camera: 6.3 > 20 megapixels; -30°C; absolute CCD cooling > -55°C to ambient
f/0.70 lens (choice of manual or motorized lens)	f/0.70 lens (choice of manual or motorized lens)	Proprietary V.070 motorized lens (24 mm); FOV: 24 x 20 cm
Epi white light	Epi white light	CN-800 darkroom with epi white light
Colored blot marker imaging	Colored blot marker imaging	Color imaging
Evolution-Capt software including analysis features	Evolution-Capt software including analysis features	Evolution-Capt software including analysis features
Chemi only - no filter-wheel	4-position manual filter-wheel	7-position manual filter-wheel
No optional ECX table or PAD	Optional ECX table (not sliding out)	Optional PAD
No optional Spectra capsule adapter	Optional Spectra capsule adapter	Optional Spectra capsule adapter
VilberFUSION-FX6.EDGE V.070	VilberFUSION-FX6.EDGE V0.70/SPECTRA	VilberFUSION-FX7.EDGE V.070/SPECTRA
EVO-6 CCD camera: 6.3 > 20 megapixels; -30°C; absolute CCD cooling > -55°C to ambient	EVO-6 CCD camera: 6.3 > 20 megapixels; -30°C; absolute CCD cooling > -55°C to ambient	DARQ-9 CCD camera: 4.6 megapixels; -65°C absolute cooling
Proprietary V.070 motorized lens (24 mm); FOV: 24 x 20 cm	Proprietary V.070 motorized lens (24 mm); FOV: 24 x 20 cm	Proprietary V.070 motorized lens (24 mm); FOV: 22 x 22 cm
CN-800 darkroom with epi white light	CN-800 darkroom with epi white light	CN-800 darkroom with epi white light
Color imaging	Color imaging	Color imaging
Laser positioning system	Laser positioning system	Laser positioning system
Evolution-Capt software including analysis features	Evolution-Capt software including analysis features	Evolution-Capt software including analysis features
7-position manual filter-wheel	7-position manual filter-wheel	7-position manual filter-wheel
Optional PAD	Optional PAD	Optional PAD
Spectra Capsule adapter included - 7 slots	Spectra Capsule adapter included - 7 slots	Spectra Capsule adapter included - 7 slots

[BACK TO INDEX](#)

Immunological Assays & Purified Biomarkers

(Life Diagnostics)

Fisher Biotec offers the *Life Diagnostics* range of ELISA kits, [SPARCL™ Assay kits](#), purified biomarkers and antibodies for preclinical research and veterinary diagnostics. The research kits available include cardiovascular, acute phase, immunotoxicity and immunology biomarkers in species including mouse, rat, rabbit, cat, dog, pig, cow, monkey and chicken. Because of the increasing research into PEGylated biologics, ELISA kits for detection of PEG, mPEGylated proteins and anti-PEG antibodies are also available.



For more information, view the links below:

Acute Phase Proteins - Acute phase proteins including alpha-1-acid glycoprotein, CRP, haptoglobin and SAA are used as biomarkers of inflammation, infection and tissue injury. *Life Diagnostics* manufactures [Acute Phase Protein ELISA kits](#), [SPARCL™ Assay kits](#), [purified proteins](#) and antibodies for acute phase protein research and diagnostic assay development in preclinical research species, companion animals and livestock.

Cardiovascular Biomarkers - *Life Diagnostics* aid the development of new drugs, diagnostic assays and surgical procedures by manufacturing [Cardiovascular Biomarker ELISA kits](#), including troponin-I, myoglobin and FABP in all species used in preclinical research. High purity TnI, myoglobin and FABP for use as standards/controls, or for antibody development, are also available.

Immunoglobulins - Immunoglobulin levels can provide important information in preclinical research as to health status and drug treatment. *Life Diagnostics* manufacture [Immunoglobulin ELISA kits](#), [SPARCL™ Assay kits](#) and [purified proteins](#) for measurement of immunoglobulin levels in a range of species.

Immunotoxicity ELISA Kits - Anti-KLH, -sheep red blood cell and -tetanus toxoid IgM and IgG are used as biomarkers of immunotoxicity. *Life Diagnostics* manufacture [Immunotoxicity ELISA kits](#) for these biomarkers in mice, rats, chickens, and monkeys.

Skeletal Muscle Biomarkers - Skeletal muscle troponin-I is considered the biomarker of choice for detection of muscle injury because it is expressed exclusively in skeletal muscle. *Life Diagnostics* has developed [Skeletal Muscle Biomarker ELISA kits](#), [SPARCL™ Assay kits](#), [purified proteins](#) that can be used to assess skeletal muscle injury in many species.

PEG Reagents - Attachment of polyethylene glycol (PEG) chains to therapeutic antibodies and enzymes increases circulating half-life of the biologic entity. *Life Diagnostics* manufacture monoclonal antibodies and [PEG Reagent ELISA kits](#) for detection of PEG and methoxy-PEGylated proteins. ELISA kits for detection of anti-PEG IgG and IgM in mice, rats and monkeys are also available.

Liver Biomarkers - Evaluation of liver toxicity is essential during drug development. *Life Diagnostics* manufacture [Liver Biomarker ELISA kits](#) for assessment of liver toxicity and injury.

[BACK TO INDEX](#)

Micro-Volume Spectrophotometers

NanoReady Touch – Micro-Volume (UV-Vis)

The *LifeReal* NanoReady Touch series Micro-Volume (UV-Vis) spectrophotometer, with built-in large 17cm high-resolution colour touch screen, can complete all detection functions without connecting a computer, display test results in real-time, store historical data, and export to a computer.

- Choice of different models - Full Wavelength, Fixed Wavelength, Micro-Volume or Cuvette, to meet flexible detection needs.
- No need for a computer, with built-in Android operating system.
- Wider detection range: 0.2 ng/μl - 27,500 ng/μL dsDNA.
- Stable, accurate and reliable detection value.
- Customisable wavelength - built-in spectrometer, fixed wavelength model can be upgraded to any wavelength configuration.



Specifications	FC- 3100	F - 3100	FC - 2100	F - 2100
Detector	2048 - Element CCD linear image sensor			
Light Source	Xenon flash lamp			
Minimum Sample Volume (μL)	0.5			
Pathlength (mm)	0.03, 0.05, 0.1, 0.2, 1.0 auto-ranging			
Wavelength Upgrade	NA		Available	
Wavelength Range (nm)	185 - 910		Default 230, 260, 350, 600 (Optional 185 - 910 customised)	
Wavelength Accuracy (nm)	±1			
Measurement Repeatability	0.002 (1mm path) or 1% CV, whichever is greater			
Photometric Accuracy	±2% (at 0.86A at 257 nm)		3% (at 0.64A at 350 nm)	
Limit of Detection	Pedestal: 2ng/μL dsDNA, 0.06mg/mL BSA, 0.03 mg/mL IgG			
Maximum Concentration	Pedestal: 27, 500ng/μL dsDNA, 820 mg/mL BSA, 400 mg/mL IgG			
Measurement Time(s)	≤5			
Cuvette Temperature (°C)	37±0.5	NA	37±0.5	NA
Cuvette Stirring	10-900 RPM 10 Speeds	NA	10-900 RPM 10 Speeds	NA
Cuvette Photometric	0-1.5A (10mm)	NA	0-1.5A (10mm)	NA
Cuvette Limit of Detection	0.2 ng/μL dsDNA 0.006 mg/mL BSA 0.003 mg/mL IgG	NA	0.2ng/μL dsDNA 0.006 mg/mL BSA 0.003 mg/mL IgG	NA
Display	7-inch, 1280 x 800 high-definition LCD, Multipoint capacitive touch, Gesture recognition			
Internal Storage	32 GB flash memory			
Data Transfer and PC Connections	USB, Wi-Fi			

[BACK TO INDEX](#)

MaestroNano – Micro-Volume

The *Maestro*gen MaestroNano (MN-917) DNA RNA quantification spectrophotometer incorporates a whole new design concept. It uses a vertical slide design to provide a more durable and stable sample measuring area without requiring any optical fibres. The MaestroNano has a reliable measurement range of concentration from 2 to 2000 (ng/μL) and very low interference from ambient light, resulting in more accurate measurement.

- Built-in Android operating system, no need for a computer.
- Measurement range of concentration - 2 to 2000 (ng/μL).
- Convenient, uses 2 ul sample for easy measurement in less than 5 secs
- Accurate, high reproducibility and repeatability
- Adjustable light intensity for more stable performance
- Automatic calibration
- User-friendly interface, touch screen, USB, Wi-Fi and QR code.
- Low-cost operation, no plates, or other consumables
- Long life due to “non-optical” fiber system.



Specifications	MN-917
Measurement Sample Size	2 μL
Measurement Data Output	(A) OD230nm, OD260nm, OD280nm, OD320nm (B) Sample concentration (ng/μL) (C) OD260nm/OD230nm, OD260nm/OD280nm
Minimum Concentration	2 ng/μL (dsDNA), 1.6 ng/μL (RNA)
Maximum Concentration	2,000 ng/μL (dsDNA), 1,600 ng/μL (RNA)
Absorbance Range (10 mm)	0.04 - 40
Pathlength	0.5 mm
Measurement Time	<5 sec
Light Source	Xenon flash lamp
Data Output Interface	1. Wi-Fi 1 (USB dongle) 2. OTG USB X 1 (connected to PC to access) 3. Ethernet X 1 (RJ-45)
Operating Voltage	12V



[BACK TO INDEX](#)

OUR COMPANY

During 2022 Fisher Biotec is celebrating 25 years of service to Australian science. Since 1997 Fisher Biotec has continually expanded its product range to provide high quality products and services to the Australian scientific community.

Fisher Biotec offers the scientific market a fresh and innovative alternative with personalised service, providing cost effective solutions and tools to our customers for their life science research work.

Our aim is to exceed our customers' expectations at every level and offer best possible value for money. Fast forward 25 years and it's these same principles that underpin everything that Fisher Biotec still does.

Fisher Biotec would like to thank all its loyal customers. Your support and commitment to buying from a customer focused, wholly Australian-owned business, has enabled our continuing success.

OUR CORE VALUES

- Dedicated to excellence
- Committed to integrity and service
- Focused on providing customer satisfaction

OUR QUALITY GUARANTEE

Fisher Biotec practices continual improvement to be recognized as a leader in our industry and our management system is certified to JAS-ANZ ISO 9001:2015 for the sale and supply of equipment and consumables to the pharmaceutical and laboratory health care industry.

LOCATION

HEAD OFFICE:

198 Cambridge Street Wembley WA 6014
PO Box 169, Subiaco WA 6904

FREECALL: 1800 066 077

TEL: +61-8-9382 3511

FAX: +61-8-9382 3611

NATIONAL SALES/SERVICE SUPPORT:

Representation in all States and Territories



We proudly represent the following local and world leading brands

abcam

AND
A&D Company Limited
...Clearly a Better Value

AusGeneX

AXYGEN
A Corning Brand

BECKMAN
COULTER

biosan

BIOSEARCH™
TECHNOLOGIES
GENOMIC ANALYSIS BY ICG

Biotium

BTX®
The Electroporation Experts

Cleaver
SCIENTIFIC

ESCO
LIFESCIENCES GROUP

FAVORGEN®
BIOTECH CORP

HANNA®
instruments

iba
Solutions
For Life Sciences

iST SCIENTIFIC

Kyratec.

Labnet
Labnet International, Inc.

Life Diagnostics, Inc.

Life Real

MAESTROGEN

MAGBIO
ACCELERATING genomic research

mawi
Biosampling Reinvented™

MRC
Holland

Neuvitro Corporation

RATEK

SCIEX

Sequence
BioTech, LLC

SERANA®
Science for Life

Simport
Scientific inc.

Sorenson™
BioScience, Inc.

Vale
Life Sciences

VILBER
Smart Imaging