

Kit Contents:

- iSWAB vial
- 4 applicators
- Plastic “biohazard” bag with absorbent pad*
- Extra barcode label (for lab use only)
- “Exempt Human Specimen” label*
- The outer box will be used to mail back the sample

Not included in rack format.

* Item may not be included in certain countries.
For research use only. Not for use in diagnostic procedures.

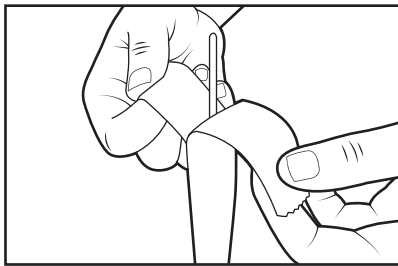


Read ALL steps before collecting samples!

Important:

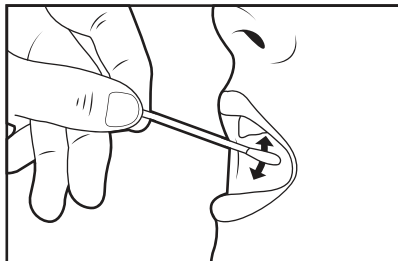
- Do not eat, drink, or smoke for 30 minutes prior to using the kit
- Do not touch swab tips or allow contact with any other object
- You will be using ALL 4 included applicators

1



Place vial standing up on flat surface. Peel open bags containing applicators and remove an applicator. Unscrew vial cap.

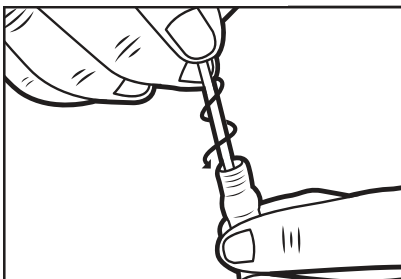
2



Rub applicator firmly against the inside of your cheek 15-20 times, using light pressure similar to brushing your teeth.

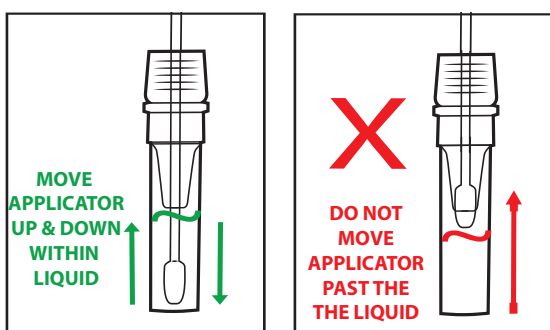
- Rotate applicator as you are rubbing.
- Cover entire cheek from top to bottom and side to side. **USE ALL APPLICATORS ON THE SAME CHEEK. DO NOT ALTERNATE CHEEKS DURING COLLECTION.**

3



Pick up vial and hold steady in one hand. Slowly twist applicator into iSWAB vial with a corkscrew motion. There will be resistance, but push applicator all the way to the bottom of tube.

4

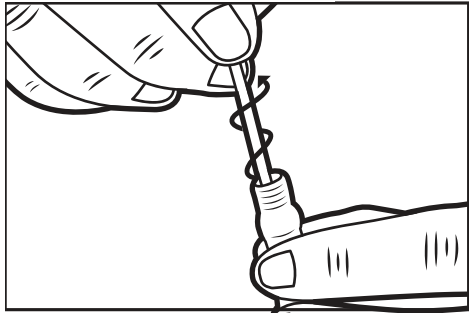


Hold vial steady and move applicator up and down rapidly inside the tube 10-15 times without moving the applicator out of the liquid.



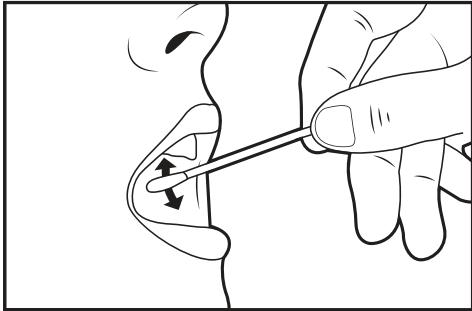
Australian distributors:
Fisher Biotec Australia
free call: 1800 066 077
email: info@fisherbiotec.com
web: www.fisherbiotec.com

5



At this point remove and discard the applicator. Hold vial firmly and remove applicator by slowly twisting out with a corkscrew motion. **DO NOT PLACE APPLICATORS IN THE BIOHAZARD BAG.**

6



Repeat steps 2-5 with all 4 included applicators in the kit. Use all applicators on the same cheek. Do not alternate cheeks during collection. **MAKE SURE ALL 4 APPLICATORS ARE USED.**

7



After using all applicators, inspect the solution through the opening between the label. If the collection has been done properly, the word **“SWAB”** should disappear.

If you can still read the word “SWAB”: Repeat collection process after 2 hrs or the next day in the morning before eating or brushing your teeth using Q-tips® swabs, or any standard cotton swabs. Usually 1-2 extra swabs for re-swabbing might be sufficient, but make sure the word “SWAB” is not visible before sending the sample back to the lab.

For lab or onsite collection: Proceed with sample processing or storage.
For home collection: Continue with steps 8-11.

- 8 Replace cap tightly and place vial in Biohazard bag. The extra barcode label is for lab use only. Place Biohazard bag with vial and extra barcode label back in the box.
- 9 Place a return address label on top of the box over the original label, and return postage on the upper right corner.
- 10 Place the “Exempt Human Specimen” label on the bottom left, so it is not covering the postage or return address label.
- 11 Peel the tape strip from under the top flap and re-seal the box.