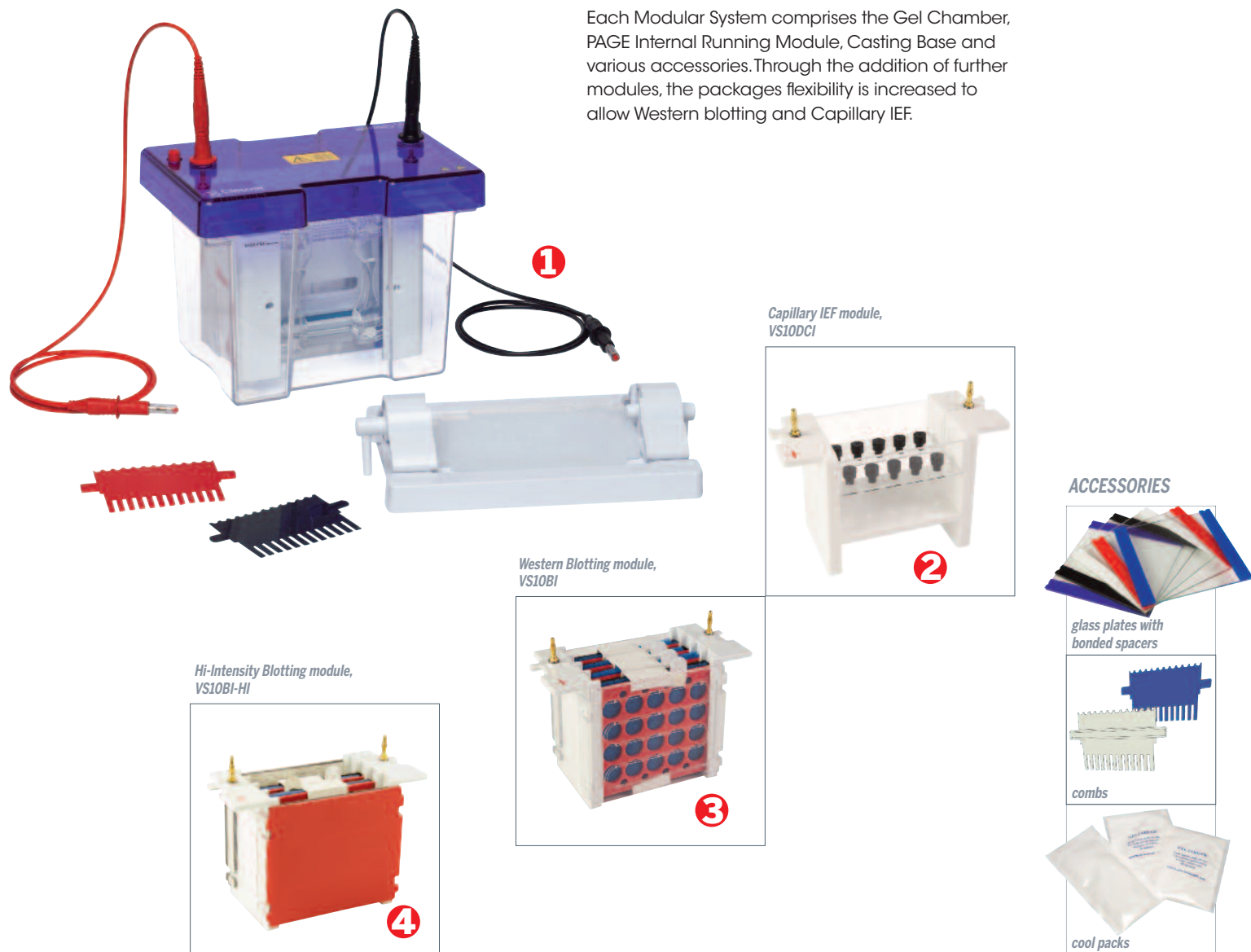


omniPAGE Mini Modular Systems

The omniPAGE range of Modular Vertical Gel Systems allow multiple electrophoresis techniques to be performed in the same unit. Using the same main tank and lid, three different modules are interchangeable for PAGE, tube gel and electroblotting techniques.

Each Modular System comprises the Gel Chamber, PAGE Internal Running Module, Casting Base and various accessories. Through the addition of further modules, the packages flexibility is increased to allow Western blotting and Capillary IEF.



ORDERING INFORMATION

CVS10CES	Complete Mini (10x10cm) Vertical Electrophoresis Modular System , comprising: 1x Mini Vertical Unit, CVS10DSYS (1) which includes: PAGE Module, 2x2mm thick notched glass plates, 2x2mm thick plain glass plates with 1mm thick bonded spacers, 1x blanking plate, 2x combs (1mm thick, 12 samples), 1x casting base, silicone mat, cooling pack plus: 1x Capillary Electrophoresis Module, VS10DCI (2) and 1x Electroblotting Module, VS10BI (3) comprising: internal electroblotting module, 4x compression cassettes for gel sizes up to 10x10cm and 8x fibre pads		
CVS10C2DS	Complete Mini (10 x 10cm) Vertical Electrophoresis & 2-D System , comprising: 1x Mini Vertical Unit, CVS10DSYS (1) which includes: PAGE Module, 2x2mm thick notched glass plates, 2x2mm thick plain glass plates with 1mm thick bonded spacers, 1x blanking plate, 2x combs (1mm thick, 12 samples), 1x casting base, silicone mat, cooling pack plus: 1x Capillary Electrophoresis Module, VS10DCI (2)		
CVS10CBS	Complete Mini (10 x 10cm) Vertical Electrophoresis & Blotting System , comprising: 1x Mini Vertical Unit, CVS10DSYS (1) which includes: PAGE Module, 2x2mm thick notched glass plates, 2x2mm thick plain glass plates with 1mm thick bonded spacers, 1x blanking plate, 2x combs (1mm thick, 12 samples), 1x casting base, silicone mat, cooling pack plus 1x Standard Electroblotting Module, VS10BI (3)		
CVS10CBS-HI	Complete Mini (10 x 10cm) Vertical Electrophoresis & High Intensity Blotting System , comprising: 1x Mini Vertical Unit, CVS10DSYS (1) which includes: PAGE Module, 2x2mm thick notched glass plates, 2x2mm thick plain glass plates with 1mm thick bonded spacers, 1x blanking plate, 2x combs (1mm thick, 12 samples), 1x casting base, silicone mat, cooling pack plus: 1x High Intensity Electroblotting Module, VS10BI-HI (4)		
VS10DCI	omniPAGE Mini Tube Unit (2)	VS10BI-HI	High Intensity omniPAGE Blot Mini insert - includes 2 cassettes and 8 fibre pads (4)
VS10BI	OmniBlot Mini Insert - including 4 cassettes, 16 foam pads (3)	SB10	omniBlot Mini 10 x 10cm Blotting System

Semi Dry Blotters

These Semi Dry Blotters offer rapid transfer times for DNA, RNA and protein blotting - typically 15 to 30 minutes.

All units can be used for all types of blotting: western, southern and northern via uncomplicated buffer and set up procedures and are compatible with gel thicknesses from 0.25 up to 10mm without the need for additional equipment.

Semi Dry Blotting has the added benefit of economic transfers due to very low buffer volumes - typically only a few millilitres of buffer are required per transfer. The electrodes, comprising platinum coated anode and stainless steel cathode, will exhibit practically no corrosion and so provide many years of trouble free use. Uniform heat dispersion across the blot sandwich ensures stable transfer times and no heat induced sample loss or transfer distortions.



KEY FEATURES

- Rapid transfer times
- Western, Southern and Northern Blots
- Economic Transfers due to very low buffer volumes
- Screw down lid - accommodates gels from 0.25 up to 10mm
- Uniform heat dispersion

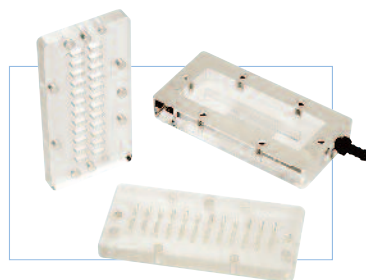
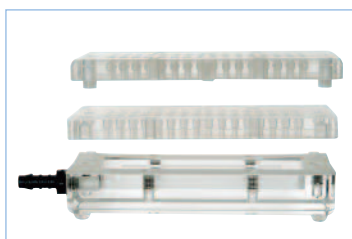
Dot and Slot

Dot Blot and Slot Blot microfiltration manifolds are designed for DNA and RNA filter blot hybridisations and immunological (Ag/Ab) screening applications.

Machined from high density acrylic, their precision lapped mating surfaces and leak proof gasket ensures uniform filter contact, preventing lateral transfer of samples- smudging - by ensuring that a complete vacuum is formed. A permanent filter template is provided with each manifold to simplify the cutting of filters to the exact size. A vacuum of approximately 600mm Hg (0.8 Bar) is required during sample application. Four configurations are available for 24 & 48 for slots and 48 & 96 wells for dots in the configuration of standard microplates. Each well is alpha-numerically grid referenced for easy identification.

KEY FEATURES

- Low cost
- Easy assembly
- Alpha-numeric sample identification
- Four sample configurations



Model	D48	D96	S24	S48
Configuration	3 x 16	8 x 12	2 x 12	3 x 16
Size of well	6mm diameter	6mm diameter	6 x 0.5mm	6 x 0.5mm
12mm deep	12mm deep	12mm deep	12mm deep	12mm deep
Vacuum required	----- 600mm Hg 0.8 BAR with cold trap -----			
Unit dimensions	6x9.5x10cm	6x10.5x14cm	6x7.4x8.3cm	6x9.5x10cm
Membranes size required	12.1 x 4.4cm	11 x 7.4cm	12.1 x 4.4cm	12.1 x 4.4cm

ORDERING INFORMATION

SEMI DRY BLOTTERS

SD10 Semi Dry Mini, 10 x 10cm System SD20 Semi Dry Midi, 20 x 20cm System

DOT & SLOT BLOTTERS

CSL-D48 48-well Dot Blot Manifold, 3 x 16 array CSL-S24 24-well Slot Blot Manifold, 2 x 12 array
 CSL-D96 96-well Dot Blot Manifold, 8 x 12 array CSL-S48 48-well Slot Blot Manifold, 3 x 16 array