

UltraBright LED Transilluminator

Safe for You, Good for your sample

- **Accurate:**
< 5% CV across the full filter area
- **Sensitivity:**
Up to 1 ng nucleic acid
- **Safe:**
No damage to you and your samples
- **Easy:**
Easy for observation and gel cutting
- **Flexibility:**
Suit for several kinds of stains and adjustable intensity

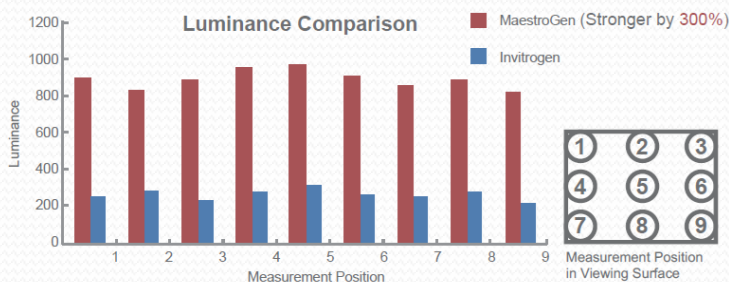


The UltraBright LED Transilluminator is designed for viewing stained gels on the laboratory bench, or within gel documentation systems.

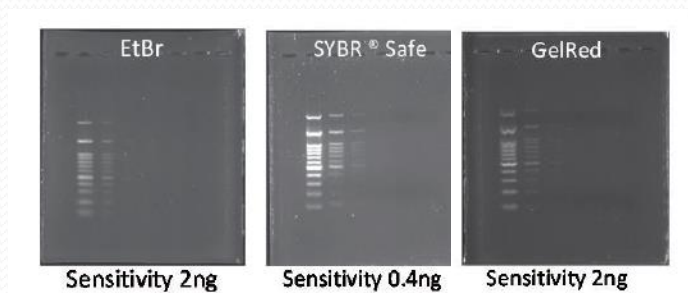
Light from the LED source inside the instrument producing light with a narrow emission peak centered at approximately 470 nm, effective for the excitation of nucleic acid and protein stains such as EtBr, SYBR® Safe, SYBR Gold, SYBR® Green I & II, SYPRO® Ruby, SYPRO® Orange, Coomassie Fluor™ Orange stains, GelGreen, GelRed and Lumitein™ Protein Gel Stain.



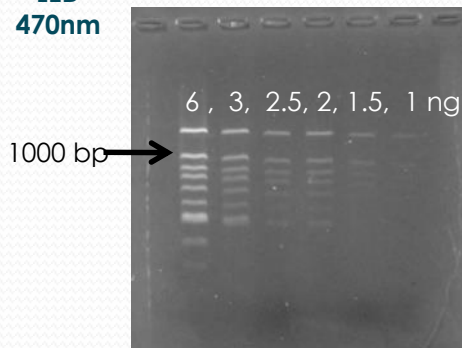
Variance of light < 5%,
the best spec in the world



The best uniformity and intensity



**LED
470nm**



The best sensitivity (1 ng) when MaestroSafe is used combined with MaestroGen LED Transilluminator.

Ordering Information and Specification:

Products	UltraBright LED Transilluminator	
Cat No.	LB-16	LB-17
Outer dimensions (mm)	280D x 340W x 80H	280D x 340W x 80H
View size (mm)	160D x 200W	160D x 200W
Wavelength (nm)	470 nm	470 (Blue), 530 (Green), 630 (Red); no 630(Red) filter
Light source	Blue LED light	Blue Green Red LED light
Uniformity	< 5% CV	< 5% CV
Power	12V - 2.5A	24V - 1.25A
Weight (Kg)	3.6 kg	3.6 kg

Related product:

Products	MaestroSafe Nucleic Acid loading dye	MaestroSafe Prestained dye	MiniCute Imager
Cat No.	MR-031201	MR-031203	MC-02
Description	Prestained with agarose.	Substitute for loading dye.	Imagers for DNA and protein gels photography which is also easy for gel cutting after photography