

# BioWAND Sampling Applicator

mawi

## INSTRUCTIONS FOR ORAL USE – English

Caution: Read all steps before collecting samples.

### DEVICE NAME

BioWAND-2 Sampling Applicator

### INDICATION FOR USE

The BioWAND Sampling Applicator is intended for specimen collection of biological samples. It is a non-invasive swab-based sampling applicator and is intended to be used for oral buccal cell sample collection. The BioWAND is designed for optimal sample collection and release capabilities and is compatible with many sample transport devices, making it ideal for multiple swab sample pooling in a single device. The BioWAND is ready for use and does not require any preparation for specimen collection.

### CONTENTS

BioWAND-2 Sampling Applicator

\* Item may not be included in certain countries.

### STORAGE AND STABILITY

Pre-collection Stability: 3 years from date of manufacture between 15-30° C

Storage: 15-30° C

Additional information available at [www.mawidna.com](http://www.mawidna.com)

### WARNING AND PRECAUTIONS

This product is sterile and for single use only. Do not use if there is evidence of damage to the pouch or it is beyond the expiration date printed on the pouch. Choking hazard. Do not ingest. Keep out of reach of children. Use with caution.

Refer to SDS.

### DEVICES

All BioWAND family of products consist of a sterile sampling applicator.

REF	Catalog Number	Product Family Name	Collection Volume
BW3-2		BioWAND-2 Sampling Applicator	2 Swab/Pouch



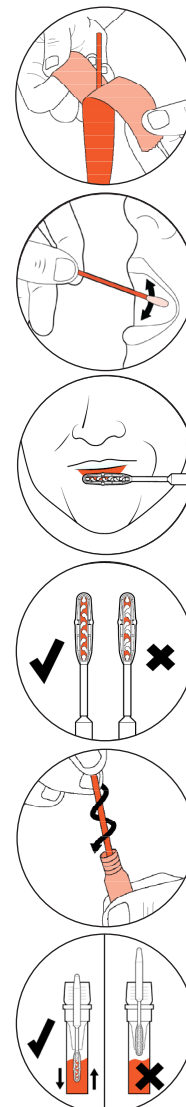
BioWAND

### PREPARATION FOR USE

Before sample collection, verify preferred method of collection with your processing lab.

- Note: It is recommended not to eat, drink, or smoke for 30 minutes before collecting your sample.
- For the best results, collect samples in the morning right after waking up before eating, drinking, and brushing your teeth.
- Do not touch swab head or allow contact with any other object.
- Use 2 BioWANDS per iSWAB™ tube.

- 1** For oral collection: Tap the bottom of the iSWAB™ tube onto a hard surface before collection to concentrate liquid to the bottom, then unscrew the cap.
- 2** Remove one BioWAND swab from the pouch. Insert it into your mouth and rub the swab on both sides for 10 seconds per cheek. Make sure to swab your entire cheeks for the best results.
- 3** Generate foamy saliva in your mouth by simulating chewing-like motions at the front of your mouth.
- 4** Push saliva in between lips and hold the swab as seen in the image, then coat the swab with spit as you twirl it in a circular motion in the saliva pool.
- 5** Remove the swab from your mouth carefully and inspect it against a light source. Make sure that the empty spaces are entirely filled with saliva. If not, repeat this step with the same swab.
- 6** Pick up the iSWAB™ tube and hold it steadily in one hand, then Insert the swab into the tube and twist it around, making sure to thoroughly mix the spit into the solution. There will be resistance and click noise.
- 7** Next, hold the tube firmly and remove the swab slowly from the tube, then properly dispose of the swab.
- 8** With the second swab, repeat steps 3 through 7 (no need to scrub the cheeks).
- 9** After all samples have been taken, replace the cap tightly
- 10** Proceed with the post collection instructions.



⚠ Attention. See instructions for use.  
🌡 Storage temperature.  
📅 Use by date (collect sample by).  
📖 Consult package insert before use.  
👤 For one use only.  
CE CE marking.

🚫 Do not use if package is damaged.  
📦 LOT Lot number.  
📋 REF Catalog Number.  
👤 Authorized representative.  
🏢 Manufacturer.  
🏠 In vitro diagnostic medical device.

**Mawi DNA Technologies LLC**  
1252 Quarry Lane, Suite A | Pleasanton, CA 94566  
Tel: 510-256-5186 Toll Free (US & Canada): 855-DNA-SWAB  
[www.MawiDNA.com](http://www.MawiDNA.com)

CE IVD EC REP CEpartner4U  
Esdoornlaan 13 | 3951 DB  
Maarn | The Netherlands  
[www.cepartner4u.com](http://www.cepartner4u.com)