



VILBER QUANTUM ST4

Industry standard



> APPLICATIONS

• NUCLEIC ACID DETECTION

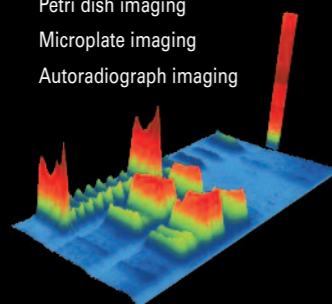
Ethidium bromide, SYBR™ Green, SYBR™ Gold, Texas red™, Gel Star™

• OTHER

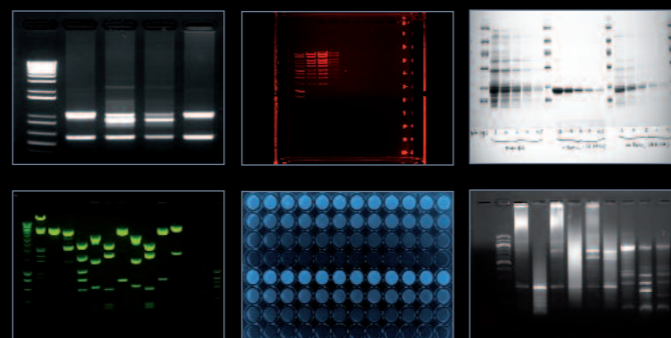
Petri dish imaging
Microplate imaging
Autoradiograph imaging

• PROTEIN DETECTION

Coomassie blue, Sypro™ Ruby, Sypro™ Orange, Sypro™ Red, Silver Star™, Fluorescein



> PHOTO GALLERY



> KEY FEATURES

- PC based system for publication and analysis grade imaging
- Scientific Sony chip CCD camera
- 1.4 megapixels resolution / USB2 interface
- 16-bit – exquisite pixel depth
- Highly sensitive scientific CCD camera and optics
- Manual or motorized zoom lens / Multi-position filter slide
- Free software for image acquisition & analysis



> TESTIMONIALS

“ Our QUANTUM ST4 system offers everything we need: excellent results, user friendly image acquisition and free software for all the users. We appreciate the darkroom UV epillumination as well as the filter slide for imaging of different dyes. ”

The roll-out transilluminator is very convenient for gel cutting and the door UV security switch is a great protection.



FAST, ACCURATE AND EASY IMAGE ACQUISITION



QUANTUM-CAPT is the complimentary software supplied with the QUANTUM ST4 system. It includes a powerful and easy-to-use image acquisition module. An automatic pixel saturation warning and a display of the image dynamic enhance the image acquisition. They ensure optimum quality of the final image, which can then be instantly printed or saved for further analysis or publication.

QUICK AND SIMPLE ANALYSIS



In addition to image acquisition, QUANTUM-CAPT software offers multiple analysis features. It includes three main analysis components: molecular weight, band quantification, colony counting.

COMPLETE AND FLEXIBLE IMAGE ENHANCEMENT



The image enhancement module enables editing of comments, image inversion, contrast and brightness adjustment, as well as the use of pseudo colors for colorimetric samples.

VILBER QUANTUM ST4

Industry standard



SPECIFICATIONS

Camera and optics

Scientific Sony chip CCD camera
Real time and integration time
Grade 0, zero defect
Progressive scan – Low dark current
HAD (Hole Accumulation Diode) sensor
Continuous variable-speed shutter
USB2 interface
Scientific grade zoom lens. Japanese optics
Manual or motorised configurations
Autofocus for the motorised configuration

Scientific Sony chip CCD camera
Real time and integration time
Grade 0, zero defect
Progressive scan – Low dark current
HAD (Hole Accumulation Diode) sensor
Continuous variable-speed shutter
USB2 interface
Scientific grade zoom lens. Japanese optics
Manual or motorised configurations
Autofocus for the motorised configuration

Resolution

1,4 megapixels – Sony chip
1360 (H) x1024 (V)

1,4 megapixels – Sony chip
1360 (H) x1024 (V)

Pixel depth

True 16-bit, 65 536 grey levels

True 16-bit, 65 536 grey levels

Sensitivity

High sensitivity for DNA/protein fluorescence detection
All images saved with a GLP
(Good Laboratory Practice) file

High sensitivity for DNA/protein fluorescence detection
All images saved with a GLP
(Good Laboratory Practice) file

Software

Quantum ST4 is supplied with the Quantum-Capt software image enhancement and basic image analysis
The Quantum ST4 images are compatible with Bio-1D and Bio-Gene software for quantification: transform your 1D gel into 3D results

> VERSATILE & UPGRADEABLE

In standard, the QUANTUM ST4 systems are ideal for a wide range of fluorescence applications. You can also customize your own system or upgrade later thanks to different options to add versatility and imaging experiments:

- Super-Bright UV filter technology for multi-applications gel imaging
- StarLight RGB LED epi-illumination module for bioluminescence, in-vivo and fluorescence on membrane
- Filtered UV epi-illumination modules
- PC controlled motorized scientific zoom lens
- UV to white light conversion screen for white light samples such as protein gels or autoradiographs
- UV to blue light conversion screen for dyes such as GFP II™, SYBR Green™ or Sypro Orange™.
- Large variety of interchangeable filters or Universal configuration
- Bio-1D advanced image analysis software

> COMPLIMENTARY SOFTWARE

• IMAGE ACQUISITION

Real time and integration time modes
...

• IMAGE ENHANCEMENT

Editing of comments and symbols
...

• IMAGE ANALYSIS

Molecular weight calculation
...

Complete list of features page 39



CONFIGURATIONS

Darkroom

CN-3000 darkroom

Includes a slide-out build-in transilluminator & UV security switch
Multiposition filter slide
Upgradable to StarLight module
Uniform white light or UV light epi-illumination sources
Single or dual wavelength transilluminator available
Filter size : 20x20cm or 21x26cm
Optional Super-Bright UV filter technology
UV to white light or UV to blue light conversion screen available

CN-1100 darkroom

Includes a slide-out build-in transilluminator & UV security switch
Multiposition filter slide
Overhead white light by fluorescent tubes
Single or dual wavelength transilluminator available
Filter size : 20x20cm or 21x26cm
Optional Super-Bright UV filter technology
UV to white light or UV to blue light conversion screen available