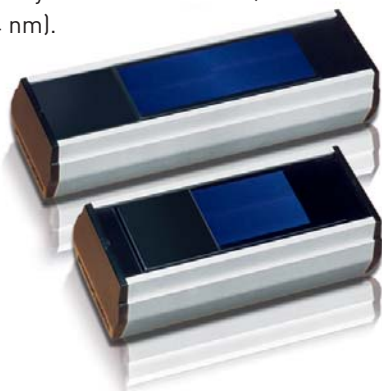


FILTERED LAMPS FOR FLUORESCENCE

The Vilber Lourmat lamps are provided in 254, 312, 365 nm or combined. Our unique filter minimizes white light interference allowing you to easily detect weak fluorescence. The filter has unlimited life expectancy for 312 and 365nm (3000 hours for 254 nm).



KEY FEATURES

- UV Master® technology with single or dual wavelength
- Long life filter and high UV output
- Ondulex® reflector & aluminium housing for increased durability
- Easy to handle; stand or holder to add versatility



SPECIFICATIONS

Models	Tubes (Watt)	Wavelength (nm)	Intensity at 15cm (μW/cm ²)
VL-215.L	2 x 15-watt	365	2 300
VL-215.C	2 x 15-watt	254	1 780
VL-215.M	2 x 15-watt	312	3 000
VL-215.LC	1 x 15-watt	365	1 350
	1 x 15-watt	254	1 100
VL-215.LM	1 x 15-watt	365	1 350
	1 x 15-watt	312	1 800
VL-215.MC	1 x 15-watt	312	1 800
	1 x 15-watt	254	930
VL-115.L	1 x 15-watt	365	1 100
VL-115.C	1 x 15-watt	254	1 000
VL-115.M	1 x 15-watt	312	1 000
VL-8.L	1 x 8 -watt	365	800
VL-8.C	1 x 8 -watt	254	820
VL-8.M	1 x 8 -watt	312	790
VL-8.LC	1 x 8 -watt	365	720
	1 x 8 -watt	254	520
VL-8.LM	1 x 8 -watt	365	720
	1 x 8 -watt	312	660
VL-8.MC	1 x 8 -watt	312	660
	1 x 8 -watt	254	520
VL-6.L	1 x 6-watt	365	700
VL-6.C	1 x 6-watt	254	710
VL-6.M	1 x 6-watt	312	680
VL-6.LC	1 x 6-watt	365	610
	1 x 6-watt	254	400
VL-6.LM	1 x 6-watt	365	610
	1 x 6-watt	312	580
VL-6.MC	1 x 6-watt	312	580
	1 x 6-watt	254	400
VL-4.L	1 x 4-watt	365	400
VL-4.C	1 x 4-watt	254	340
VL-4.LC	1 x 4-watt	365	350
	1 x 4-watt	254	265

UNFILTERED LAMPS

Our large choice of unfiltered lamps range from 4 watt to 3x40-watt each. The black light (BL) lamps provide a 365 nm UV radiation, with visible light. The black light blue (BLB) lamps provide a 365 nm UV radiation, without visible light [self-filtering tube].



KEY FEATURES

- UV Master® technology
- High UV output
- Ondulex® reflector for optimum UV irradiance
- Anodised aluminium housing for increased durability
- Lamp stand or holder to add versatility

SPECIFICATIONS

BLACK LIGHT LAMPS

Models	Tubes (Watt)	Wavelength (nm)	Intensity ($\mu\text{W}/\text{cm}^2$)
VL-204.BL	2 x 4-watt	365 BL	715 (1)
VL-206.BL	2 x 6-watt	365 BL	1 215 (1)
VL-208.BL	2 x 8-watt	365 BL	1 400 (1)
VL-115.BL	1 x 15-watt	365 BL	50
VL-215.BL	2 x 15-watt	365 BL	108
VL-315.BL	3 x 15-watt	365 BL	147
VL-120.BL	1 x 20-watt	365 BL	60
VL-220.BL	2 x 20-watt	365 BL	129
VL-320.BL	3 x 20-watt	365 BL	177
VL-130.BL	1 x 30-watt	365 BL	106
VL-230.BL	2 x 30-watt	365 BL	228
VL-330.BL	3 x 30-watt	365 BL	312
VL-140.BL	1 x 40-watt	365 BL	140
VL-240.BL	2 x 40-watt	365 BL	302
VL-340.BL	3 x 40-watt	365 BL	413

Intensity at 1 meter except (1) at 15 cm

BLACK LIGHT BLUE LAMPS

Models	Tubes (Watt)	Wavelength (nm)	Intensity ($\mu\text{W}/\text{cm}^2$)
VL-204.BLB	2 x 4-watt	365 BLB	660 (1)
VL-206.BLB	2 x 6-watt	365 BLB	1 120 (1)
VL-208.BLB	2 x 8-watt	365 BLB	1 300 (1)
VL-115.BLB	1 x 15-watt	365 BLB	46
VL-215.BLB	2 x 15-watt	365 BLB	100
VL-315.BLB	3 x 15-watt	365 BLB	136
VL-120.BLB	1 x 20-watt	365 BLB	55
VL-220.BLB	2 x 20-watt	365 BLB	119
VL-320.BLB	3 x 20-watt	365 BLB	163
VL-130.BLB	1 x 30-watt	365 BLB	98
VL-230.BLB	2 x 30-watt	365 BLB	210
VL-330.BLB	3 x 30-watt	365 BLB	288
VL-140.BLB	1 x 40-watt	365 BLB	129
VL-240.BLB	2 x 40-watt	365 BLB	279
VL-340.BLB	3 x 40-watt	365 BLB	381

Intensity at 1 meter except (1) at 15 cm

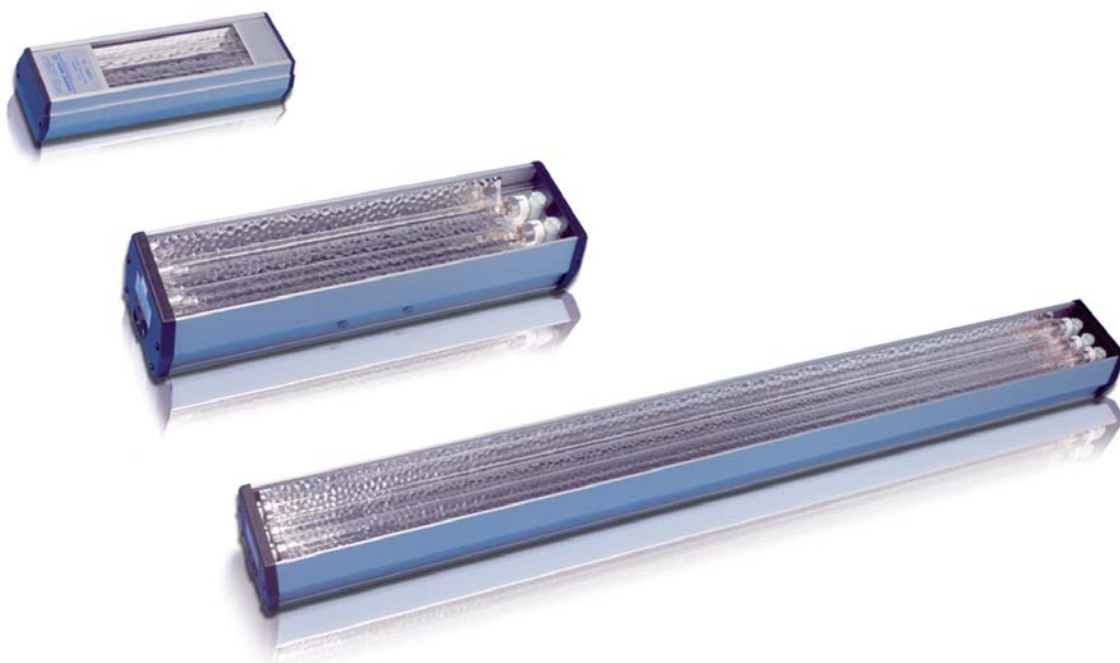
GERMICIDAL LAMPS

THE DESTRUCTOR

The UV germicidal lamps help to prevent contamination in research laboratories, food factories or in medical environment. These lamps emit 254 nm UV radiation, well known for their efficiency in the destruction of bacteria, moulds, yeasts and viruses.

KEY FEATURES

- High UV output
- Ondulex® reflector for optimum UV irradiance
- Anodised aluminium housing for increased durability
- Lamp stand or holder to add versatility
- Ease of use



SPECIFICATIONS

Models	Tubes (Watt)	Wavelength (nm)	Intensity ($\mu\text{W}/\text{cm}^2$)
VL-204.G	2 x 4-W	254	680 (1)
VL-206.G	2 x 6-W	254	1 400 (1)
VL-208.G	2 x 8-W	254	1 800 (1)
VL-115.G	1 x 15-W	254	31
VL-215.G	2 x 15-W	254	76
VL-315.G	3 x 15-W	254	95
VL-120.G	1 x 20-W	254	38
VL-220.G	2 x 20-W	254	95
VL-320.G	3 x 20-W	254	119
VL-130.G	1 x 30-W	254	60
VL-230.G	2 x 30-W	254	152
VL-330.G	3 x 30-W	254	191
VL-140.G	1 x 40-W	254	70
VL-240.G	2 x 40-W	254	157
VL-340.G	3 x 40-W	254	219

Intensity at 2 meters except (1) at 15 cm

GERMICIDAL LAMPS

UV LAMPS

254NM ENERGY REQUIRED TO KILL GERMS ON CULTURE

Bacteria	Dose 90% ⁽¹⁾	Dose 99% ⁽²⁾	Mould spores	Dose 90% ⁽¹⁾	Dose 99% ⁽²⁾
Bacillus anthracis	4,52	9,04	Aspergillus flavus (yellow green)	60	120,00
Bacillus megatherium - spores	2,73	5,46	Aspergillus glaucus (blue green)	44	88,00
Bacillus megatherium - vegetal	1,30	2,60	Aspergillus niger (black)	132	264,00
Bacillus paratyphosus	3,20	6,40	Mucor racemosus A (white gray)	17	34,00
Bacillus subtilis	7,10	14,20	Mucor racemosus B	17	34,00
Bacillus subtilis - spores	12,00	24,00	Oospora lactis (white)	50	100,00
Campylobacter jejuni	1,10	2,20	Penicillium digitatum (olive)	44	88,00
Clostridium tetani	12,00	24,00	Penicillium expensum (olive)	13	26,00
Corynegacterium diptheriae	3,37	6,74	Penicillium roqueforti (green)	13	26,00
Dysenteriae bacilli	2,20	4,40	Rhizopus nigricans (black)	110	220,00
Eberthella typhosa	2,14	4,28			
Escherichia coli	3,00	6,00			
Klebsiella terrifani	2,60	5,20			
Legionella pneumophila	0,90	1,80			
Micrococcus candidus	6,05	12,10			
Micrococcus sphaeroides	10,00	20,00			
Mycobacterium tuberculosis	6,00	12,00			
Neiseria catarrhalis	4,40	8,80			
Phytomonas tumefaciens	4,40	8,80			
Pseudomonas aeruginosa	5,50	11,00			
Pseudomonas fluorescens	3,50	7,00			
Proteus vulgaris	2,64	5,28			
Salmonella enteritidis	4,00	8,00			
Salmonella paratyphi	3,20	6,40			
Salmonella typhimurium	8,00	16,00			
Salmonella lutea	19,70	39,40			
Serratia marcescens	2,42	4,84			
Shigella paradysenteriae	1,63	3,26			
Shigella sonnei	3,00	6,00			
Staphylococcus albus	1,84	3,68			
Staphylococcus aureus	2,60	5,20			
Streptococcus faecalis	4,40	8,80			
Streptococcus hemolyticus	2,16	4,32			
Streptococcus lactus	6,15	12,30			
Streptococcus viridans	2,00	4,00			
Vibrio cholerae	3,50	7,00			
Yersinia enterocolitica	1,10	2,20			

Protozoa	Dose 90% ⁽¹⁾	Dose 99% ⁽²⁾
Blue green (algae)	300	600,00
Chlorella vulgaris (algae)	12	24,00
Cryptosporidium parvum	2,5	5,00
Giardia lamblia	1,1	2,20

Virus	Dose 90% ⁽¹⁾	Dose 99% ⁽²⁾
Hepatitis A	7,3	14,60
Influenza virus	3,6	7,20
MS-2 Coliphage	18,6	37,20
Poliomyelitis (polio virus)	5,8	11,60
Rotavirus	8,1	16,20

Yeasts	Dose 90% ⁽¹⁾	Dose 99% ⁽²⁾
Baking yeast	3,90	7,80
Brewing yeast	3,30	6,60
Saccharomyces cerevisiae	6,00	12,00
Saccharomyces ellipsoideus	6,00	12,00
Saccharomyces	8,00	16,00

⁽¹⁾ Sterilization up to 90% - Energy in mW-sec/cm² - 1 mJ/cm² = 1 mW/cm² x sec

⁽²⁾ Sterilization up to 99% - Energy in mW-sec/cm² - 1 mJ/cm² = 1 mW/cm² x sec

