



# VILBER FUSION FX7

## The ultimate sensitivity

Fusion FX7 is an image acquisition system dedicated to the capture of chemiluminescence and fluorescence images. Using the most advanced cooled CCD technology in combination with a state of the art motorised optical lens, the Fusion FX7 offers a very high sensitivity and an extended dynamic range.

Fusion FX7 is especially designed to be very simple to use. Just load the sample, adjust the optics and launch the image acquisition according to your protocol.

Data produced by the Fusion FX7 are directly compatible with the broad range of image analysis software developed by VILBER. Transform your 1D image into 3D results with our Bio-1D and the Bio-Gene software.

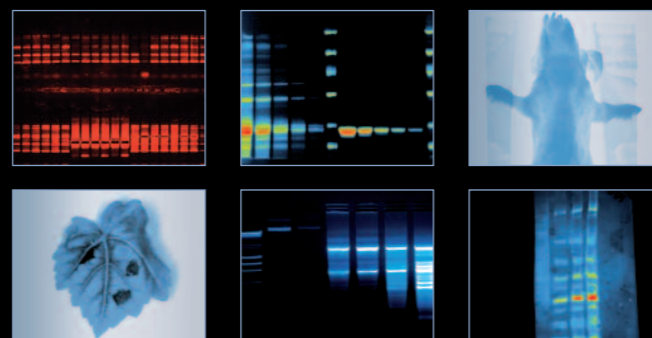


## > KEY FEATURES

- The ultimate chemiluminescence imaging system
- Last generation of cooled CCD sensor
- Image Master assistant to easily get the optimum image
- Ultimate sensitivity
- 70% quantum efficiency at 450nm for unparalleled sensitivity
- Power without compromise
- 4.2 megapixels imaging
- Pure image integrity and access to the raw data
- Large sample size and ingenious tray system
- Free software for image acquisition & analysis

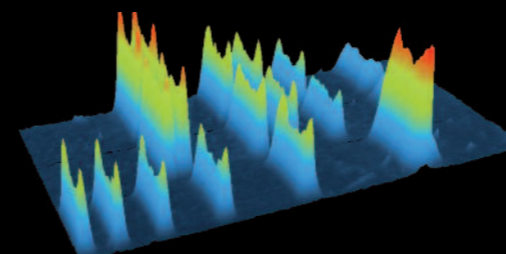


## > PHOTO GALLERY



## > APPLICATIONS

- CHEMILUMINESCENCE DETECTION  
ECL™, ECL Plus™, ECL Advance™, ECL Plex™  
CDP Star™, Super Signal™, CSPD™



## > TESTIMONIALS

“ I have been astonished by our Fusion FX7. Our system is fully motorised and just one click is necessary for image acquisition. ”

The protocol-driven image acquisition process delivers incredible results and versatility. This really helps to cover a multitude of applications.

The sensitivity is simply top class and our images are ideal for quantification.





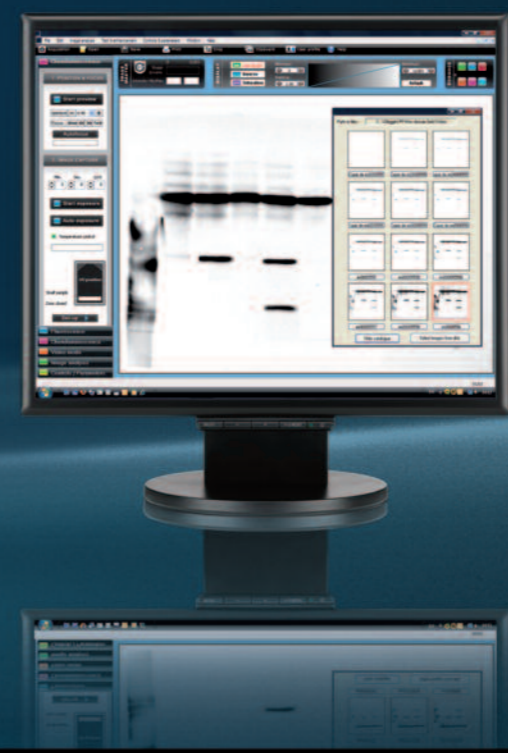
# VILBER FUSION FX5

## Power and versatility

The Fusion FX5 is an image acquisition system for the capture of chemiluminescent and fluorescent gel images.

The 2 megapixels cooled scientific CCD camera acquires high sensitivity and high-resolution images for multiple applications. Our unique darkroom accommodates a transilluminator for fluorescence applications and a separate tray for Western-blot imaging.

Together with Bio-Profil software, Fusion FX5 forms a versatile and powerful system for quantification and documentation.

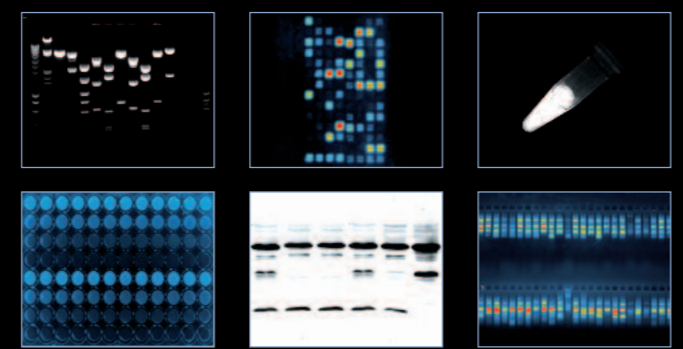


## > KEY FEATURES

- Unparalleled sensitivity
- One instrument for chemiluminescence and fluorescence
- Latest generation of cooled CCD sensor
- 2 Megapixels imaging / FireWire® interface
- Pure image integrity and access to the raw data
- Lens feedback controls
- Exclusive VILBER's UV Master™ technology
- Image Master assistant to easily get the optimum image
- Convenient versatile darkroom with multi-positions filter slide
- Compatible with the Super-Bright transilluminator technology



## > PHOTO GALLERY



## > APPLICATIONS

- **CHEMILUMINESCENCE DETECTION**  
ECL™, ECL Plus™, ECL Advance™, ECL Plex™, CDP Star™, Qdot™, Super Signal™, CSPD™
- **PROTEIN DETECTION**  
Coomassie blue, Sypro™ Ruby, Sypro™ Orange, Sypro™ Red, Silver Star™, Fluorescein, Qdot™
- **OTHER**  
Petri dish imaging  
Microplate imaging  
Autoradiograph imaging
- **NUCLEIC ACID DETECTION**  
Ethidium bromide, SYBR™ Green, SYBR™ Gold, Texas Red™ Gel Star™

## > TESTIMONIALS

“The FUSION FX5 delivers very high performance for a large number of applications. This is an incredibly versatile system.”

Together with the StarLight module for red, blue and green, we use it for applications such as GFP, SYBR Green, Western-blot, Luciferase and standard gel documentation. This is really the all-in-one necessary in our lab.





# VILBER FUSION SL

Performance at a budget



## SPECIFICATIONS

	FUSION FX7	FUSION FX5	FUSION SL
Camera and optics	Monochrome scientific grade CCD camera Real time and integration time Grade 0, zero defect Progressive scan – Low dark current 4.2 megapixels 2048 H x2048 V Cooling: -67°C compared to operating temperature (-42°C absolute & regulated) Motorised f:095 lens with autofocus and lens feedback control	Monochrome scientific grade CCD camera Real time and integration time Grade 0, zero defect Progressive scan – Low dark current 2 megapixels 1600 H x1200 V Cooling: -50°C compared to operating temperature (-25°C absolute & regulated) Motorised f:095 lens with autofocus and lens feedback control	Two models: > Fusion SL4 4.2 megapixels 2048 H x2048 V Cooling: -67°C compared to operating temperature (-42°C absolute & regulated) > Fusion SL2 2 megapixels 1600 H x1200 V Cooling: -50°C compared to operating temperature (-25°C absolute & regulated) Manual or motorised lens options
Pixel depth	True 16-bit, 65 536 grey levels	True 16-bit, 65 536 grey levels	True 16-bit, 65 536 grey levels
Sensitivity	Ultimate camera sensitivity Ideal for ECL™, ECL Plus™, ECL Advance™, CDP Star™, ECL Advance™, Super Signal™, CSPD™ and for fluorescence applications	Very high sensitivity Ideal for ECL™, ECL Plus™, ECL Advance™, CDP Star™, ECL Advance™, Super Signal™, CSPD™ and for fluorescence applications	Ideal for ECL™, ECL Plus™, ECL Advance™, CDP Star™, ECL Advance™, Super Signal™, CSPD™ and for fluorescence applications
Software	Fusion systems are supplied with the Fusion-Capt software for image enhancement and basic image analysis The Fusion images are compatible with Bio-1D and Bio-Gene software for quantification: transform your 1D gel into 3D results		

## CONFIGURATIONS

### Darkroom

Fully automatic system with motorised lens, motorised filter wheel, & automatic lighting controlled by software. True protocol-driven image acquisition. Includes a slide-out build-in transilluminator & UV security switch Multiposition filter wheel Separate tray for Western-blot imaging. Upgradable to StarLight module Uniform white light or UV light epi-illumination sources Optional Super-Bright UV filter technology UV to white light or UV to blue light conversion screen available	Fully automatic system with motorised lens, motorised filter wheel, & automatic lighting controlled by software. True protocol-driven image acquisition. Includes a slide-out build-in transilluminator & UV security switch Multiposition filter wheel Separate tray for Western-blot imaging. Upgradable to StarLight module Uniform white light or UV light epi-illumination sources Optional Super-Bright UV filter technology UV to white light or UV to blue light conversion screen available	Separate tray for Western-blot imaging. Optional transilluminator Manual filter wheel Upgradable to StarLight module Uniform white light or UV light epi-illumination sources
--	--	---

### > KEYS FEATURES

- Cost effective solution
- One instrument for chemiluminescence and fluorescence
- State of the art optics and CCD camera / USB2 interface
- Exquisite sensitivity / 2 or 4.2 megapixels
- Fantastic ease of use
- Image Master assistant feature to easily get the optimum image
- Pure image integrity and access to the raw data
- Unique VILBER filters for precise imaging & superior results
- Upgradeable system for enhanced versatility
- Exclusive VILBER's UV Master™ technology

### > APPLICATIONS

- **CHEMILUMINESCENCE DETECTION**  
ECL™, ECL Plus™, ECL Advance™, ECL Plex™, CDP Star™, Qdot™, Super Signal™, CSPD™
- **PROTEIN DETECTION**  
Coomassie blue, Sypro™ Ruby, Sypro™ Orange, Sypro™ Red, Silver Star™, Fluorescein, Qdot™
- **OTHER**  
Petri dish imaging  
Microplate imaging  
Autoradiograph imaging
- **NUCLEIC ACID DETECTION**  
Ethidium bromide, SYBR™ Green, SYBR™ Gold, Texas Red™ Gel Star™