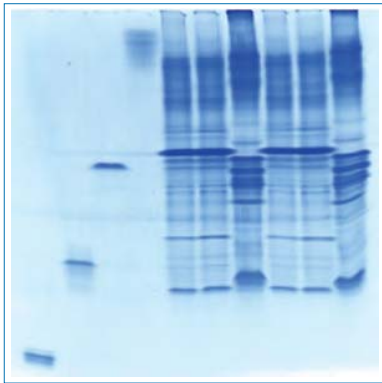


## IEF-PAG System

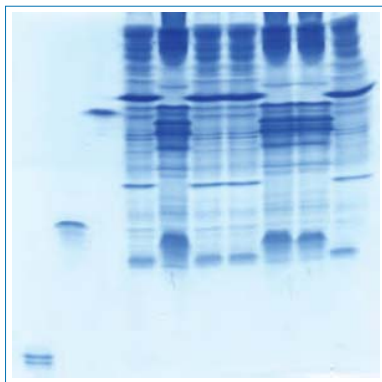
IEF-PAG System is an improved Isoelectric focusing gel for pI determination using soluble proteins. The pH 3-10 gels have a pI performance range of 3.5-8.5 and the pH 3-7 gels have a range of 3.5-7.0. The IEF-PAG System used for the first dimension also can be used in conjunction with the wide variety of 2D gels to obtain quick 2D qualifications samples.

Figure 1. pH3-10 IEF Gel



Lane 1: SIGMA Marker pI 3.6  
 Lane 2: SIGMA Marker pI 5.1  
 Lane 3: SIGMA Marker pI 6.7  
 Lane 4: SIGMA Marker pI 9.3  
 Lanes 5,6,8,9: Bovine tissue water soluble protein  
 Lanes 7,10: Porcine tissue water soluble protein

Figure 2. pH3-7 IEF Gel



Lane 1: SIGMA Marker pI 3.6  
 Lane 2: SIGMA Marker pI 5.1  
 Lane 3: SIGMA Marker pI 6.7  
 Lane 4,6,7,10: Bovine tissue water soluble protein  
 Lanes 5,8,9: Porcine tissue water soluble protein

## ■ Features

- Pre-Cast gel for determining the isoelectric point (pI) of soluble proteins
- 2-Dimensional analysis combining with 2D well format of KOMA's Tris-Glycine, Tricine or EzWay Gels after first dimension IEF gels
- 2 types of IEF Gels :
  - pH 3-10 : 3.5-8.5 pI
  - pH 3-7 : 3.5-7.0 pI

## ■ Specifications

- Gel Matrix : Acrylamide with ampholytes
- Gel Size : 8 x 8 cm
- Gel Thickness : 1.0 mm
- Cassette Size : 10 x 10 cm

## ■ Ordering Information

## ► IEF Gel

Cat.No.	Description	Size
KG0310	IEF-PAG Pre-cast Gel, pH3-10, 1.0mm, 10well	10/pk
KG0307	IEF-PAG Pre-cast Gel, pH3-7, 1.0mm, 10well	10/pk

## ► Buffers

Cat.No.	Description	Size
KIB010	IEF pH 3-10 Buffer Kit	1 Kit
KIA010	IEF Anode Buffer pH3-10 (50X)	100 ml
KIC010	IEF Cathode Buffer, pH3-10 (10X)	200 ml
KIS010	IEF Sample Buffer, pH3-10 (2X)	25 ml

Cat.No.	Description	Size
KIB007	IEF pH 3-7 Buffer Kit	1 Kit
KIA007	IEF Anode Buffer pH3-7 (50X)	100 ml
KIC007	IEF Cathode Buffer, pH3-7 (10X)	200 ml
KIS007	IEF Sample Buffer, pH3-7 (2X)	25 ml