



**EzWay™ Phos-Pep Enrichment Kit**

EzWay™ Phos-Pep Enrichment Kit provides highly selective enrichment of phosphopeptide from non-phosphorylated complex tryptic digest of proteins and facilitates the identification of phosphopeptide by mass spectrometry. Phosphopeptide identification relies on measuring the loss of mass.



■ **Features**

- Characterization of phospho-peptides
- Highly selective enrichment of phospho-peptide from non-phosphorylated complex tryptic digest of proteins
- Facilitates the identification of phospho-peptide by mass spectrometry

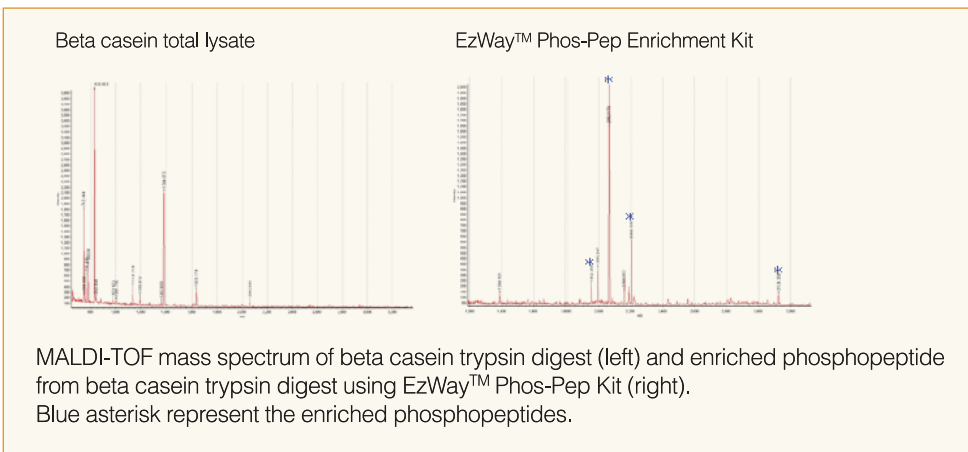
■ **Kit Components**

- Phos-Pep Solution A
- Phos-Pep Solution B
- Washing Solution : ammonium acetate buffer
- Dissolving Solution : 1% phosphoric acid
- Phosphopeptide Standard : beta casein tryptic digest

■ **How to Use**

1. Selective binding of phosphopeptide
- ↓
2. Precipitation of phosphopeptide complex
- ↓
3. Washing and Dissolving of phosphopeptide aggregates

■ **Phosphopeptide enrichment from beta casein**



■ **Ordering Information**

Cat.No.	Description	Size
K07910	EzWay™ Phos-Pep Enrichment Kit	50 reactions

EzWay™ Phos-Pro Enrichment Kit

EzWay™ Phos-Pro Enrichment Kit provides advanced chance in detecting protein phosphorylation in gels with non-radiolabeling method(eg. Staining with fluorescence dye) and enables quantitative comparison between cells. EzWay™ Phos-Pro Enrichment Kit is optimized for the protein solution in denatured condition, for example, the samples prepared for 2-DE and can be adapted to native proteins. Enriched phosphorylated proteins could be detected by staining commercially available staining method using fluorescent dye or by probing with antibodies, specific for phosphorylated proteins.

■ How to Use

1. Cell lysis and Protein extraction
2. Precipitation of phosphoprotein complex
3. Delipidation and recovering of phosphoprotein

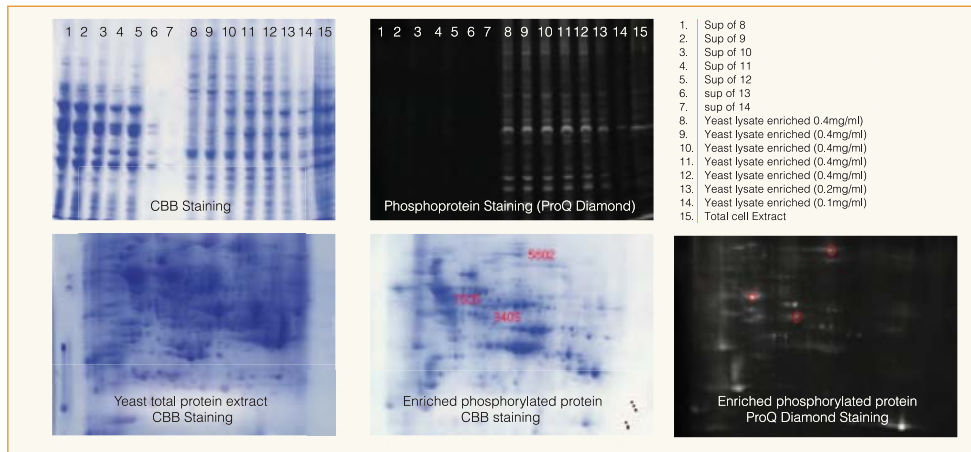
■ Features

- Convenient fractionation of phosphoproteins from protein mixtures such as cell lysate or body fluids
- Isolation and concentration of low copy phosphorylated proteins in cells
- No use of IMAC column of phosphorylated antibodies
- Downstream application for 2-DE or 1-D SDS-PAGE analysis
- Enriched phosphorylated proteins detection by staining with fluorescent dye or antibody probing
  - Specificity 100%
  - Sensitivity > 93% / 50ng
  - Yield > 93%

■ Kit Components

- Lysis Buffer
- Dilution Buffer
- Phos-Pro Solution A
- Phos-Pro Solution B
- Dissolving Solution
- Delipidation Solution
- Native Homogenation Buffer

■ Phosphoprotein Enrichment from Yeast cell Extract



■ Ordering Information

Cat.No.	Description	Size
K07920	EzWay™ Phos-Pro Enrichment Kit	10 reactions



Phospho Protein  
Enrichment

# Concentration of phosphorylated proteins!



- No use of IMAC column of phosphorylated antibodies
- Downstream application for 2-DE or 1-D SDS-PAGE analysis
- Enriched phosphorylated proteins detection by staining with fluorescent dye or antibody probing

Specificity	100%
Selectivity	> 87%
Sensitivity	> 93%
Yield	> 93%

Easy Way for Your Life Science Research  
[www.komabiotech.com](http://www.komabiotech.com)

