



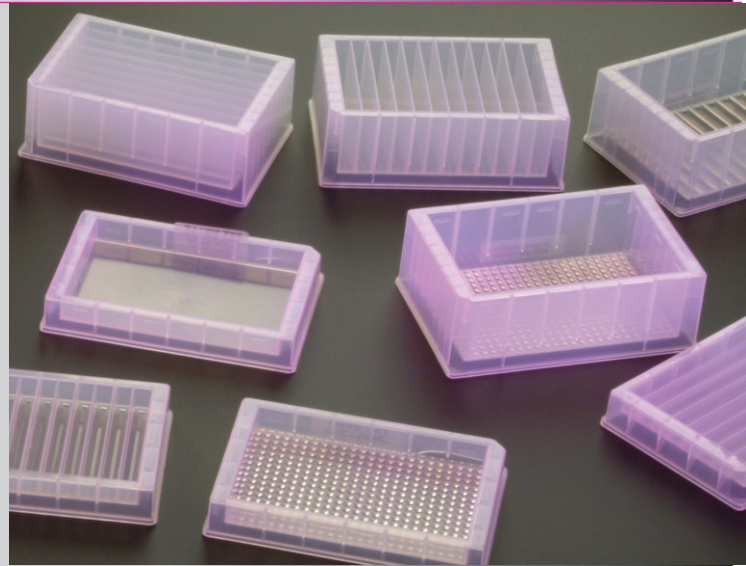
# Reagent RESERVOIRS

High and Low Profile

- SBS footprint
- Robot compatible
- Minimizes dead volume
- Durable for multi-use and cost effective for single use
- Various formats for any application

**Axygen's Reagent Reservoirs** are manufactured in translucent polypropylene. With a standard SBS footprint, they are designed to be robot compatible. Three design styles are available to fit any liquid handling application:

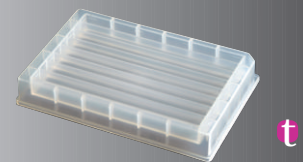
- f Flat Bottom Series:** single-well, low-profile, guaranteed flatness for a wide variety of applications.
  - i Diamond Shaped-well Series:** 96- or 384- collection pools at the bottom surface help minimize dead volume.
  - t Trough Series:** Unique "flow troughs" extending the length of the bottom surface are ideal for 8- and 12-channel applications.
- Sterile Reservoirs** are available upon request.



## 8 channel low profile

Maximum Volume	Max. Vol. per well	Color	Product Description	Axygen Cat #
32ml	4.0ml	Clear	Reservoir, multi well, 8 channel troughs, low profile	RES-MW8-LP

**Packaging Description:** 25 reservoirs/case



## 12 channel low profile

21ml	1.75ml	Clear	Reservoir, multi well, 12 channel troughs, low profile	RES-MW12-LP
------	--------	-------	--	-------------

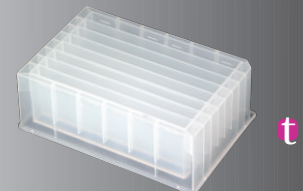
**Packaging Description:** 25 reservoirs/case



## 8 channel high profile

80ml	10ml	Clear	Reservoir, multi well, 8 channel troughs, high profile	RES-MW8-HP
------	------	-------	--	------------

**Packaging Description:** 25 reservoirs/case

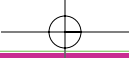


## 12 channel high profile

84ml	7.0ml	Clear	Reservoir, multi well, 12 channel troughs, high profile	RES-MW12-HP
------	-------	-------	---	-------------

**Packaging Description:** 25 reservoirs/case





// 48

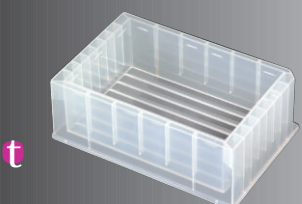
# Reagent RESERVOIRS



High and Low Profile



## 8 bottom high profile



t

Maximum Volume	Max. Vol. per well	Color	Product Description	Axygen Cat #
290ml	290ml	Clear	Reservoir, single well, 8 bottom troughs, high profile	RES-SW8-HP
<i>Packaging Description:</i>		25 reservoirs/case		

## 12 bottom high profile



t

Maximum Volume	Max. Vol. per well	Color	Product Description	Axygen Cat #
290ml	290ml	Clear	Reservoir, single well, 12 bottom troughs, high profile	RES-SW12-HP
<i>Packaging Description:</i>		25 reservoirs/case		

## 96 bottom high profile



d

Maximum Volume	Max. Vol. per well	Color	Product Description	Axygen Cat #
240ml	240ml	Clear	Reservoir, single well, 96 bottom troughs, high profile	RES-SW96-HP
<i>Packaging Description:</i>		25 reservoirs/case		

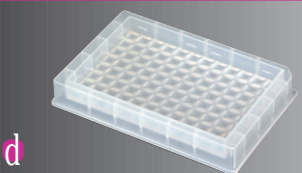
## 384 bottom high profile



d

Maximum Volume	Max. Vol. per well	Color	Product Description	Axygen Cat #
282ml	282ml	Clear	Reservoir, single well, 384 bottom troughs, high profile	RES-SW384-HP
<i>Packaging Description:</i>		25 reservoirs/case		

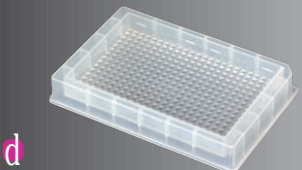
## 96 bottom low profile



d

Maximum Volume	Max. Vol. per well	Color	Product Description	Axygen Cat #
86ml	86ml	Clear	Reservoir, single well, 96 bottom troughs, low profile	RES-SW96-LP
<i>Packaging Description:</i>		25 reservoirs/case		

## 384 bottom low profile



d

Maximum Volume	Max. Vol. per well	Color	Product Description	Axygen Cat #
92ml	92ml	Clear	Reservoir, single well, 384 bottom troughs, low profile	RES-SW384-LP
<i>Packaging Description:</i>		25 reservoirs/case		

## Single bottom low profile



f

Maximum Volume	Max. Vol. per well	Color	Product Description	Axygen Cat #
90ml	90ml	Clear	Reservoir, single well, 1 bottom flat, low profile	RES-SW1-LP
<i>Packaging Description:</i>		25 reservoirs/case		

*Sterile Reservoirs are available on request*

